

**PNEUMATIC ACTUATORS**

***Series PRY***

# Structural Features

## Design and Construction

PRY series pneumatic and hydraulic actuators provide global customers the latest valve actuation design. It is a highly unique and reliable means of operating ball, butterfly or plug valves with 90 degree rotating mechanisms.

## Minimum Maintenance

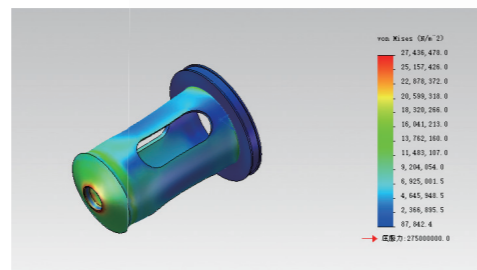
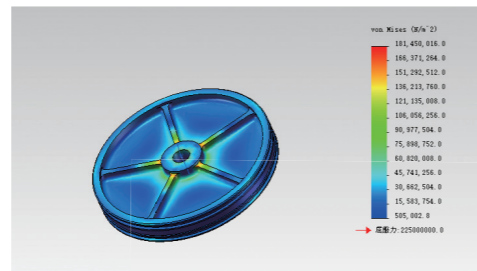
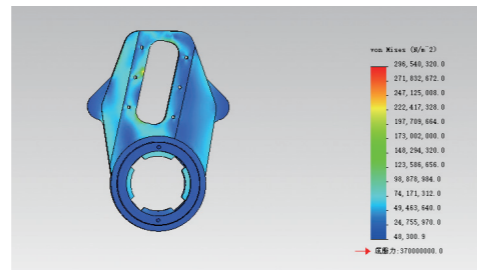
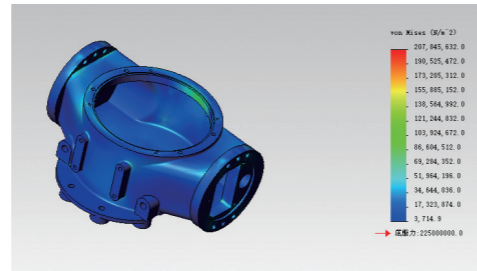
Every PRY actuator is built to provide long and efficient service with minimum maintenance. The design, engineering and materials used in their construction ensure optimum performance even in the harshest environments.

## Modular Design

PRY series actuators share a modular construction design. The centre body is available in six sizes. A pneumatic or hydraulic cylinder can be attached to either or both sides. A spring cartridge can also be fitted to either side for ESD (emergency shut down) applications. Modular construction and stocking of components facilitates quick delivery times.

## Robust Yet Lightweight Design

Totally enclosed weatherproof center-body fabricated in carbon steel or ductile iron provides an excellent strength to weight ratio.



## Complete Control Solutions

Air Control component packages are a part of any actuator/valve installation.

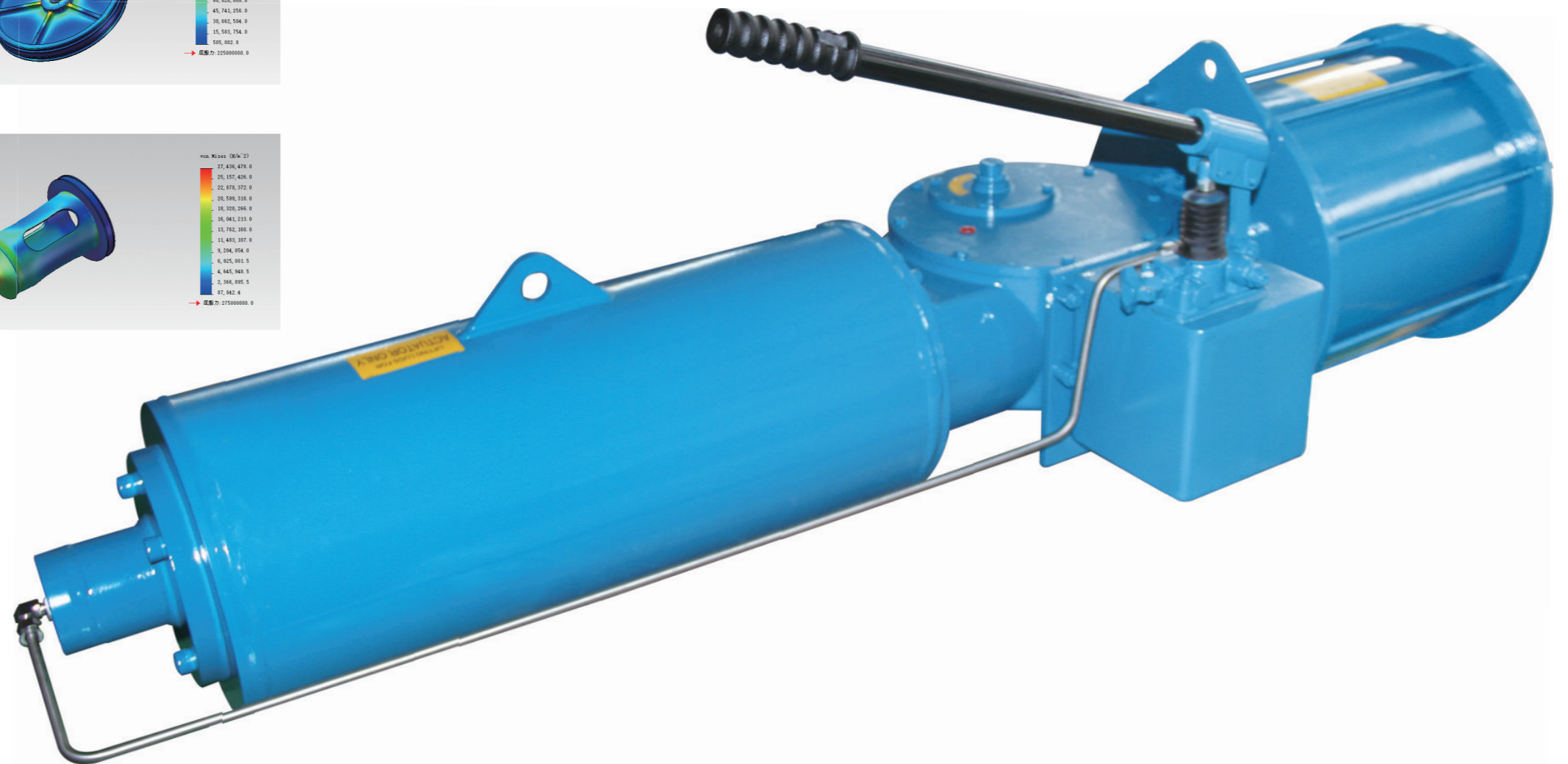
ProtACT has extensive experience in the design and assembly of all types of air control systems to satisfy any customer requirement for on/off, control or ESD service. Control units can be mounted on a panel or in a cabinet and placed either on the actuator or at a remote location.

## Extensive Product Range

ProtACT offers the most extensive line of fluid power valve actuators. Products include low and high pressure pneumatic, hydraulic and pneumatic-hydraulic actuators.

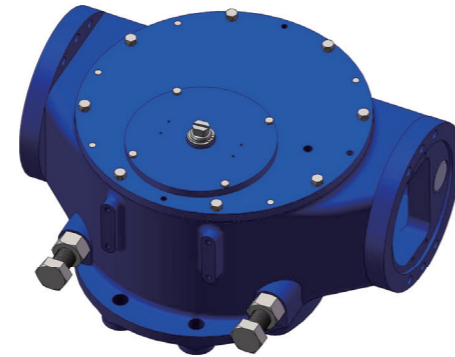
## Manual Override Options

A dependable manual override facility is an important part in many valve/actuator applications. ProtACT has a variety of override options available to meet any requirement.



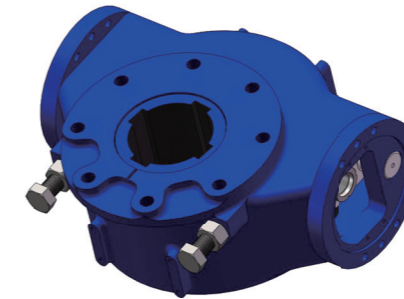
# Performance Characteristics

The pinion shape conforms to the latest standards of ISO5211, NAMUR. The dimensions can be customized and stainless steel is optionally available.  
 A Position indicator acc. to NAMUR is convenient for the assembly of accessories such as Limit Switch boxes or Positioners.

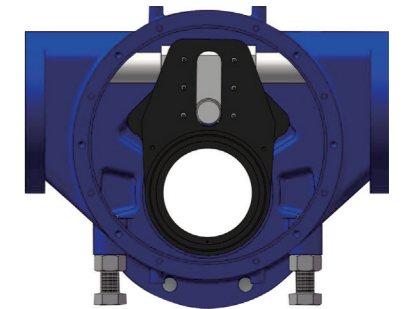


Made from low friction, long-life compound material, to avoid any direct contact between metals. The maintenance is easy and convenient.

Mounting Flange according to ISO 5211



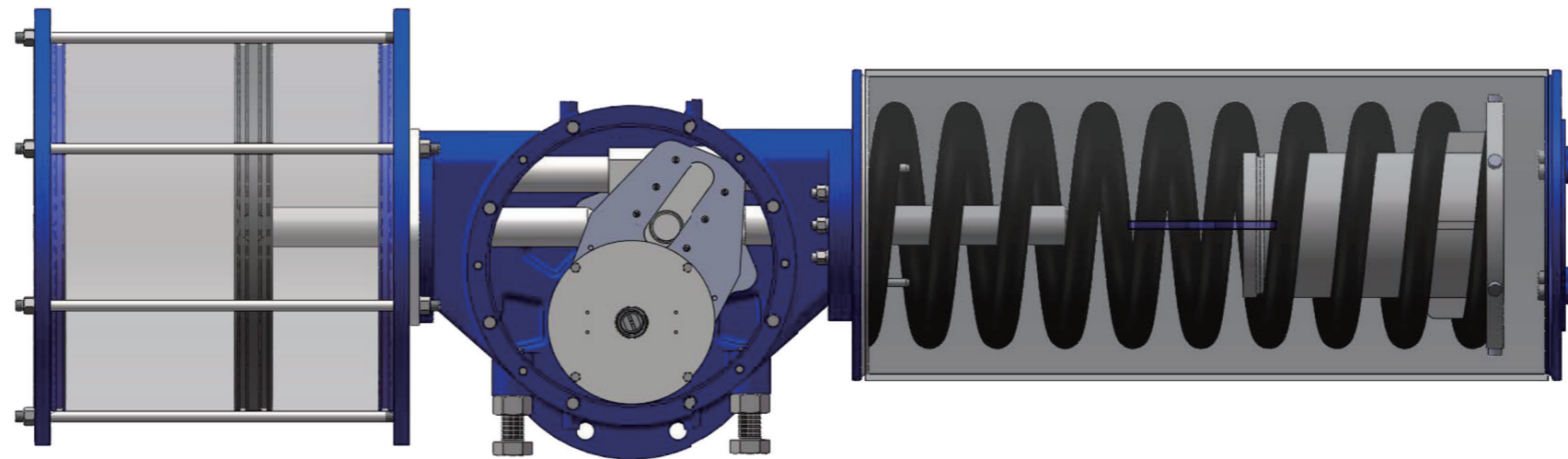
PRY actuators are available with either B or C body modules.  
 B body modules provide a balanced torque ratio at both the break and end position.  
 C body modules have a torque advantage in applications where higher break torque is needed to unseat the valve and less critical needs at the run or full open positions.



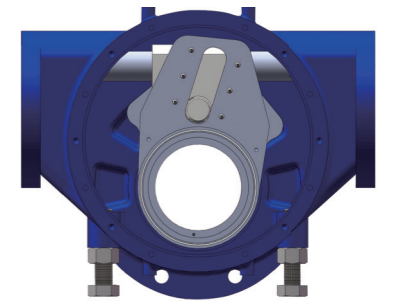
The dual-material (rubber and PFA) encapsulated O-rings can be applied to a wide range of temperature and conditions.



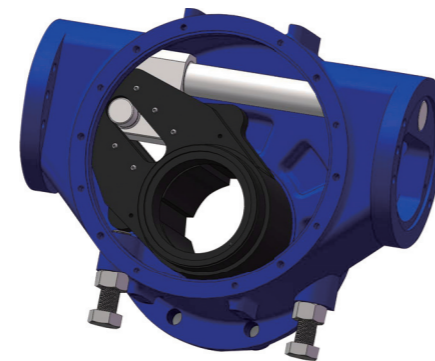
A double O-ring and bearing design ensures the stability and dependability of the modular cylinder.



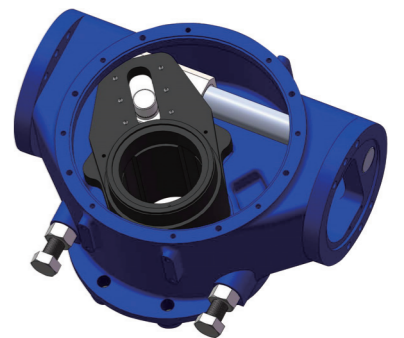
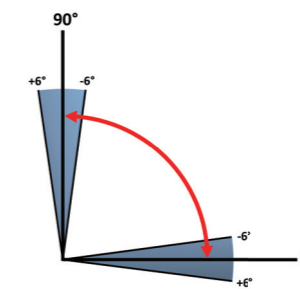
PRY actuators offer torque outputs for spring-return models up to 110,000Nm and double-acting models up to 240,000Nm at operating pressures between 3-10 bar.

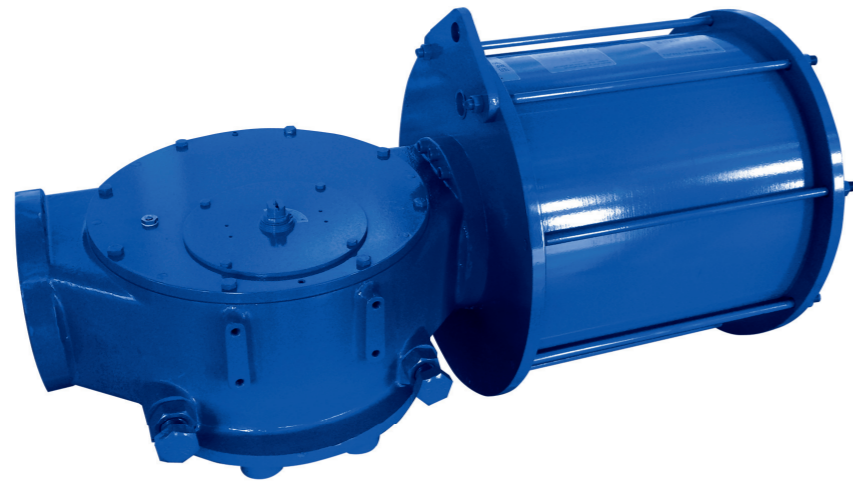
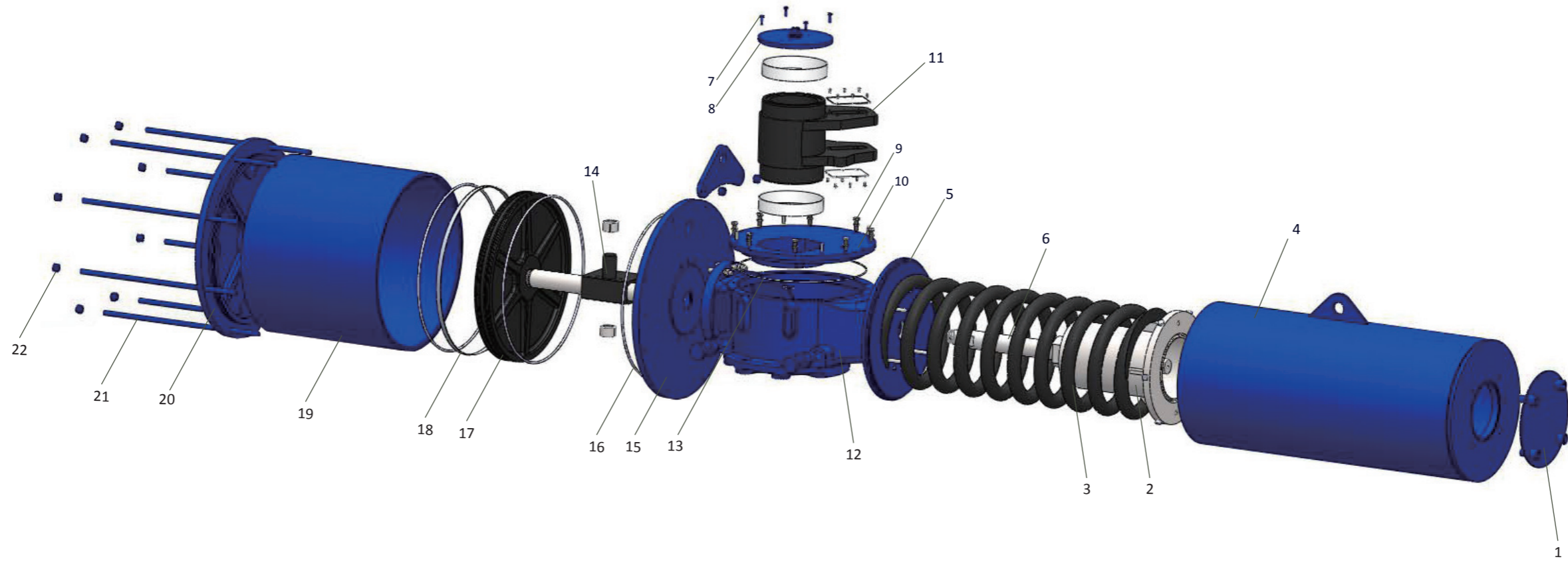


Operating temperatures:  
 Standard -20°C to +80°C  
 High Temperature -15°C to +150°C  
 Low Temperature -40°C to +80°C



Integral bi-directional travel stops, adjustable from -6° to 96° of total valve travel, assist the PY Series in prolonging valve seat integrity.





**Spring Module**

Item	Designation	Qty.	Materials
1	Flange Cap	1	Carbon Steel
2	Spring Seat	1	Carbon Steel
3	Spring	1	Spring Steel
4	Spring Body	1	Carbon Steel
6	Spring Stem	1	Alloy Steel

**Center Body Module**

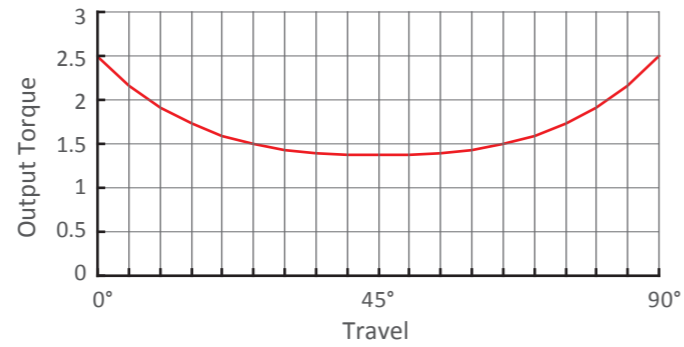
Item	Designation	Qty.	Materials
5	Bear Seat	1	Carbon Steel
7	Screw	n	Carbon Steel
8	Indicator	1	Carbon Steel
9	Screw	n	Carbon Steel
10	Centre Body Cap	1	Ductile Iron
11	Yoke	1	Ductile Iron
12	Centre Body	1	Ductile Iron
13	Cap O-ring	1	Rubber
14	Drive Mechanism	1	Alloy Steel

**Cylinder Module**

Item	Designation	Qty.	Materials
15	Cylinder Seat	1	Ductile Iron
16	O-ring	1	Rubber
17	Piston	1	Carbon Steel
18	Guide Ring	1	Resin
19	Cylinder Body	1	Carbon Steel
20	Cylinder Cap	1	Ductile Iron
21	Screw	n	Carbon Steel
22	Screw Nut	n	Carbon Steel

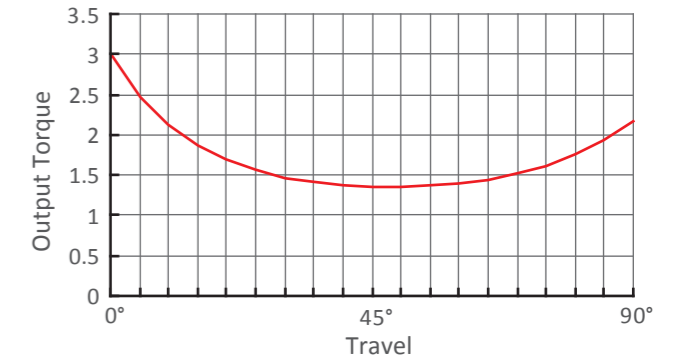
# Output Torque

## Output Torque of PRY.B Series Double Acting Actuator



Model	Output Torque (Nm) Air Pressure (Bar)											
	3.5Bar			4Bar			5Bar			6Bar		
	0°	45°	90°	0°	45°	90°	0°	45°	90°	0°	45°	90°
PRY.B06.201D	1269	670	1269	1451	766	1451	1814	958	1814	2154	1138	2154
PRY.B08.221D	2000	1056	2000	2286	1207	2286	2857	1509	2857	3428	1810	3428
PRY.B08.251D	2599	1372	2599	2970	1568	2970	3712	1960	3712	4455	2352	4455
PRY.B1.281D	3836	2026	3836	4384	2315	4384	5480	2894	5480	6576	3473	6576
PRY.B1.321D	5035	2659	5035	5754	3039	5754	7193	3798	7193	8631	4558	8631
PRY.B1.351D	6039	3189	6039	6902	3644	6902	8627	4556	8627			
PRY.B2.351D	7193	3798	7193	8220	4341	8220	10275	5426	10275	12330	6511	12330
PRY.B2.401D	9440	4985	9440	10789	5697	10789	13486	7122	13486	16184	8546	16184
PRY.B2.451D	11988	6330	11988	13700	7235	13700	17126	9043	17126			
PRY.B3.451D	14306	7555	14306	16350	8634	16350	20438	10792	20438	24525	12951	24525
PRY.B3.501D	17723	9359	17723	20255	10696	20255	25318	13369	25318	30382	16043	30382
PRY.B3.561D	22297	11774	22297	25483	13456	25483	31854	16820	31854	38224	20184	38224
PRY.B3.601D	25635	13537	25635	29297	15470	29297	36621	19338	36621			
PRY.B4.601D	30797	16263	30797	35197	18586	35197	43996	23232	43996	52796	27879	52796
PRY.B4.631D	33986	17946	33986	38841	20510	38841	48552	25638	48552	58262	30765	58262
PRY.B4.502D	42584	22487	42584	48668	25699	48668	60835	32124	60835			
PRY.B4.701D	42031	22195	42031	48036	25365	48036	60044	31707	60044			
PRY.B4.562D	53576	28291	53576	61230	32332	61230						
PRY.B4.801D	54993	29039	54993	62849	33188	62849						
PRY.B5.701D	50399	26614	50399	57599	30416	57599	71999	38019	71999	86399	45623	86399
PRY.B5.562D	64145	33872	64145	73308	38711	73308	91635	48388	91635	109963	58066	109963
PRY.B5.801D	65984	34843	65984	75410	39820	75410	94263	49776	94263	113115	59731	113115
PRY.B5.602D	73786	38963	73786	84327	44529	84327	105409	55661	105409	126491	66794	126491
PRY.B5.632D	81454	43012	81454	93090	49156	93090	116362	61446	116362			
PRY.B5.901D	83646	44169	83646	95595	50479	95595	119494	63099	119494			
PRY.B5.702D	100799	53227	100799	115199	60831	115199						
PRY.B5.1001D	103386	54593	103386	118155	62392	118155						
PRY.B6.901D	112390	59348	112390	128446	67826	128446	160558	84783	160558	192669	101740	192669
PRY.B6.702D	135271	71430	135271	154596	81635	154596	193245	102043	193245	231894	122452	231894
PRY.B6.1001D	138964	73380	138964	158816	83863	158816	198519	104829	198519	238223	125795	238223
PRY.B6.802D	177229	93586	177229	202547	106956	202547	253184	133695	253184			
PRY.B6.902D	224781	118696	224781	256893	135653	256893						

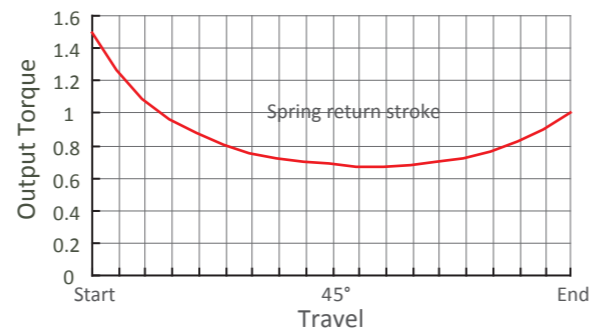
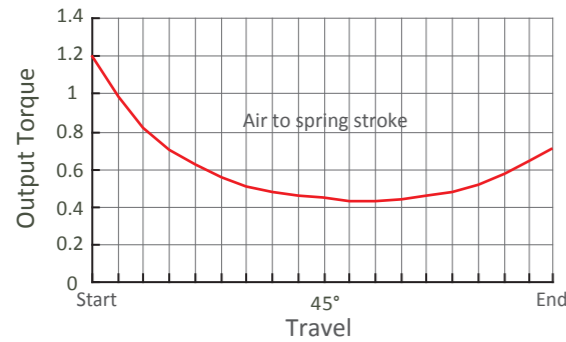
## Output Torque of PRY.C Series Double Acting Actuator



Model	Output Torque (Nm) Air Pressure (Bar)											
	3.5Bar			4Bar			5Bar			6Bar		
	0°	45°	90°	0°	45°	90°	0°	45°	90°	0°	45°	90°
PRY.C06.201D	1523	663	1068	1741	758	1220	2176	948	1525			
PRY.C08.221D	2400	1045	1682	2743	1194	1922	3428	1493	2403	4114	1792	2883
PRY.C08.251D	3118	1358	2185	3564	1552	2498	4455	1940	3122			
PRY.C1.281D	4603	2005	3226	5261	2291	3687	6576	2864	4609	7891	3436	5531
PRY.C1.321D	6042	2631	4234	6905	3007	4839	8631	3759	6049			
PRY.C2.351D	8631	3759	6049	9864	4296	6913	12330	5369	8642	14796	6443	10370
PRY.C2.401D	11329	4933	7939	12947	5638	9074	16184	7047	11342	19420	8457	13610
PRY.C2.451D	14385	6264	10082	16441	7159	11522						
PRY.C3.451D	17168	7476	12032	19620	8544	13750	24525	10680	17188	29430	12816	20626
PRY.C3.501D	21267	9261	14905	24306	10584	17034	30382	13230	21293			
PRY.C3.561D	26757	11652	18752	30579	13316	21431						
PRY.C4.561D	32146	13998	22529	36738	15998	25747	45922	19997	32184	55107	23997	38621
PRY.C4.601D	36957	16093	25901	42237	18392	29601	52796	22990	37001	63355	27589	44401
PRY.C4.631D	40783	17760	28582	46610	20297	32666	58262	25371	40832			
PRY.C4.701D	50437	21963	35348	57643	25101	40398						
PRY.C5.701D	60479	26336	42386	69119	30099	48441	86399	37623	60551	103679	45148	72662
PRY.C5.562D	76974	33519	53946	87970	38307	61652	109963	47884	77065	131955	57461	92478
PRY.C5.801D	79181	34480	55492	90492	39406	63420	113115	49257	79275	135738	59109	95130
PRY.C5.602D	88544	38557	62054	101193	44065	70919	126491	55082	88649			
PRY.C5.632D	97744	42564	68503	111708	48644	78289						
PRY.C5.901D	100375	43709	70346	114714	49954	80396						
PRY.C6.801D	106337	46306	74525	121528	52921	85171	151911	66151	106464	182293	79381	127757
PRY.C6.901D	134869	58730	94520	154136	67120	108023	192669	83900	135029	231203	100680	162035
PRY.C6.702D	162326	70686	113763	185515	80784	130015	231894	100981	162519			
PRY.C6.1001D	166756	72616	116868	190579	82989	133564	238223	103737	166955			
PRY.C6.802D	212675	92611	149050	243057	105842	170342						

# Output Torque

## Output Torque of PRY.B Series Actuator with Spring Return (NC/NO)



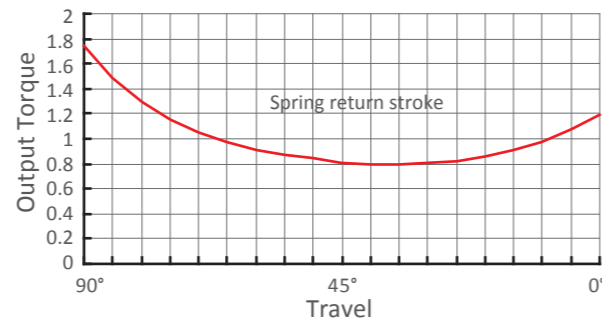
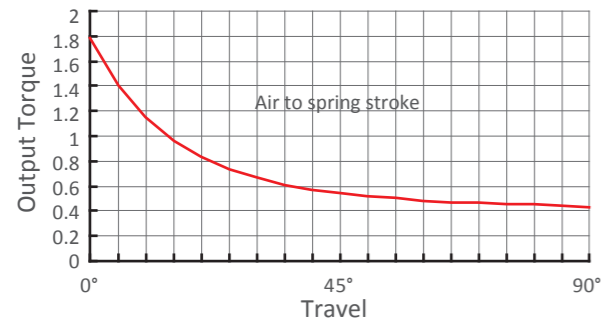
Model	Air to Spring (4Bar)			Spring			Air to Spring (5Bar)			Spring			Air to Spring (6Bar)			Spring		
	Start	45°	End	Start	45°	End	Start	45°	End	Start	45°	End	Start	45°	End	Start	45°	End
PRY.B06.201S.04	934	383	549	902	383	517	1296	575	911	902	383	517	1659	766	1274	902	383	517
PRY.B06.201S.05							1167	479	686	1128	479	646	1530	670	1049	1128	479	646
PRY.B06.201S.06													1391	567	806	1370	582	785
PRY.B06.221S.04	1116	452	635	1128	479	646	1557	685	1076	1128	479	646	1997	917	1516	1128	479	646
PRY.B06.221S.05							1418	582	833	1370	582	785	1858	814	1274	1370	582	785
PRY.B06.221S.06													1701	698	1000	1644	698	942
PRY.B08.221S.04	1449	587	834	1452	620	837	2020	889	1405	1452	620	837	2591	1190	1976	1452	620	837
PRY.B08.221S.05							1830	748	1075	1782	761	1027	2401	1049	1646	1782	761	1027
PRY.B08.221S.06													2132	850	1180	2248	960	1296
PRY.B08.251S.04	1943	807	1188	1782	761	1027	2685	1199	1930	1782	761	1027	3428	1591	2673	1782	761	1027
PRY.B08.251S.05							2416	1000	1464	2248	960	1296	3159	1392	2207	2248	960	1296
PRY.B08.251S.06													2828	1147	1633	2822	1205	1627
PRY.B08.281S.04	2445	1016	1493	2248	960	1296	3381	1509	2429	2248	960	1296	4316	2003	3364	2248	960	1296
PRY.B08.281S.05							3050	1264	1855	2822	1205	1627	3985	1758	2790	2822	1205	1627
PRY.B08.281S.06													3612	1481	2142	3470	1482	2000
PRY.B1.281S.04	2821	1157	1670	2714	1158	1563	3917	1736	2766	2714	1158	1563	5013	2315	3862	2714	1158	1563
PRY.B1.281S.05							3478	1411	2004	3476	1483	2002	4574	1990	3100	3476	1483	2002
PRY.B1.281S.06													4116	1651	2305	4271	1822	2460
PRY.B1.321S.04	3752	1556	2278	3476	1483	2002	5191	2315	3717	3476	1483	2002	6629	3075	5155	3476	1483	2002
PRY.B1.321S.05							4733	1976	2922	4271	1822	2460	6171	2736	4360	4271	1822	2460
PRY.B1.321S.06													5408	2171	3034	5597	2387	3223
PRY.B1.351S.04	4442	1822	2631	4271	1822	2460	6167	2734	4356	4271	1822	2460	7892	3645	6081	4271	1822	2460
PRY.B1.351S.05							5404	2169	3030	5597	2387	3223	7129	3080	4755	5597	2387	3223
PRY.B1.351S.06													6323	2483	3356	6996	2984	4029
PRY.B1.401S.04	5819	2388	3445	5597	2387	3223	8080	3582	5706	5597	2387	3223	10340	4775	7966	5597	2387	3223
PRY.B1.401S.05							7274	2985	4307	6996	2984	4029	9534	4178	6567	6996	2984	4029
PRY.B1.401S.06													8729	3581	5168	8395	3581	4834
PRY.B2.401S.04	6943	2848	4110	6679	2849	3846	9640	4273	6807	6679	2849	3846	12338	5697	9505	6679	2849	3846
PRY.B2.401S.05							8603	3505	5005	8481	3617	4883	11301	4929	7703	8481	3617	4883
PRY.B2.401S.06													10080	4024	5582	10602	4522	6104

Model	Air to Spring (4Bar)			Spring			Air to Spring (5Bar)			Spring			Air to Spring (6Bar)			Spring		
	Start	45°	End	Start	45°	End	Start	45°	End	Start	45°	End	Start	45°	End	Start	45°	End
PRY.B2.451S.04	8817	3618	5219	8481	3617	4883	12243	5426	8645	8481	3617	4883	15668	7235	12070	8481	3617	4883
PRY.B2.451S.05							11022	4521	6524	10602	4522	6104	14447	6330	9949	10602	4522	6104
PRY.B2.451S.06													13226	5426	7829	12722	5426	7325
PRY.B3.451S.04	10522	4317	6232	10118	4317	5828	14610	6475	10320	10118	4317	5828	18697	8634	14407	10118	4317	5828
PRY.B3.451S.05							13186	5420	7847	12591	5372	7252	17273	7579	11934	12591	5372	7252
PRY.B3.451S.06													15500	6266	8857	15668	6685	9025
PRY.B3.501S.04	13003	5324	7664	12591	5372	7252	18066	7997	12727	12591	5372	7252	23130	10671	17791	12591	5372	7252
PRY.B3.501S.05							16293	6684	9650	15668	6685	9025	21357	9358	14714	15668	6685	9025
PRY.B3.501S.06													19028	7633	10671	19711	8410	11354
PRY.B3.561S.04	16458	6771	9815	15668	6685	9025	22829	10135	16186	15668	6685	9025	29199	13499	22556	15668	6685	9025
PRY.B3.561S.05							20500	8410	12143	19711	8410	11354	26870	11774	18513	19711	8410	11354
PRY.B3.561S.06													24600	10092	14570	23654	10092	13624
PRY.B3.631S.04	20977	8662	12619	19711	8410	11354	29059	12930	20702	19711	8410	11354	37142	17198	28784	19711	8410	11354
PRY.B3.631S.05							26788	11248	16759	23654	10092	13624	34871	15516	24842	23654	10092	13624
PRY.B3.631S.06													31210	12804	18486	30010	12804	17286
PRY.B4.631S.04	24997	10255	14784	24057	10255	13844	34708	15383	24495	24057	10255	13844	44418	20510	34205	24057	10255	13844
PRY.B4.631S.05							31246	12819	18481	30071	12819	17306	40956	17946	28191	30071	12819	17306
PRY.B4.631S.06													35860	14171	19335	38927	16594	22402
PRY.B4.701S.04	30730	12546	17964	30071	12819	17306	42739	18888	29973	30071	12819	17306	54748	25229	41982	30071	12819	17306
PRY.B4.701S.05							37643	15113	21118	38927	16594	22402	49651	21454	33126	38927	16594	22402
PRY.B4.701S.06													44052	17306	23396	48657	20742	28002
PRY.B4.801S.04	40447	16594	23922	38927	16594	22402	56160	24891	39635	38927	16594	22402	71872	33188	55347	38927	16594	22402
PRY.B4.801S.05							50560	20743	29904	48657	20742	28002	66272	29040	45616	48657	20742	28002
PRY.B4.801S.06													60671	24891	35884	58390	24891	33603
PRY.B5.801S.04	48531	19910	28703	46707	19910	26879	67384	29865	47556	46707	19910	26879	86236	39820	66408	46707	19910	26879
PRY.B5.801S.05							60189	24536	35054	59209	25240	34074	79041	34491	53906	59209	25240	34074
PRY.B5.801S.06													70523	28181	39104	74011	31550	42592
PRY.B5.901S.04	61522	25240	36387	59209	25240	34074	85421	37860	60285	59209	25240	34074	109319	50479	84184	59209	25240	34074
PRY.B5.901S.05							76902	31550	45483	74011	31550	42592	100801	44169	69382	74011	31550	42592
PRY.B5.901S.06													92283	37860	54580	88813	37860	51110
PRY.B6.801S.04	65176	26739	38729	62545	26739	36098	90495	40108	64047	62545	26739	36098	115813	53478	89365	62545	26739	36098
PRY.B6.801S.05							80809	32934	47266	79327	33913	45783	106128	46304	72584	79327	33913	45783
PRY.B6.801S.06													94682	37825	52752	99158	42392	57229
PRY.B6.901S.04	82663	33913	49120	79327	33913	45783	114775	50870	81231	79327	33913	45783	146887	67826	113343	79327	33913	45783
PRY.B6.901S.05							103329	42392	61400	99158	42392	57229	135441	59348	93511	99158	42392	57229
PRY.B6.901S.06													121910	49325	70067	122603	52414	70759
PRY.B6.1001S.04	101587	41472	59657	99158	42392	57229	141291	62437	99361	99158	42392	57229	180995	83403	139065	99158	42392	57229
PRY.B6.1001S.05							127760	52414	75917	122603	52414	70759	167464	73380	115621	122603	52414	70759
PRY.B6.1001S.06													153312	62897	91100	147123	62897	84911

The torque of the springs can be customized to your needs.

# Output Torque

## Output Torque of PRY.C Series Actuator with Spring Return (NC)



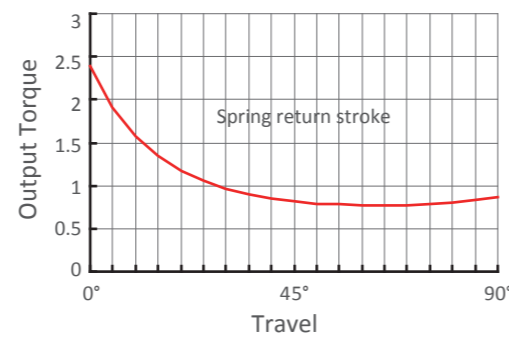
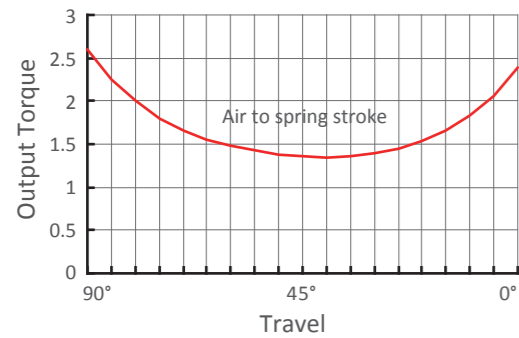
Model	Air to Spring (4Bar)			Spring			Air to Spring (5Bar)			Spring			Air to Spring (6Bar)			Spring		
	0°	45°	90°	90°	45°	0°	0°	45°	90°	90°	45°	0°	0°	45°	90°	90°	45°	0°
PRY.C06.201S.04 NC	870	279	305	915	479	870	1306	468	610	915	479	870	1741	658	915	915	479	870
PRY.C06.201S.05 NC							1088	348	381	1144	599	1088	1523	538	686	1144	599	1088
PRY.C06.201S.06 NC													1290	409	440	1390	728	1322
PRY.C06.221S.04 NC	1027	322	338	1144	599	1088	1556	552	708	1144	599	1088	2084	782	1079	1144	599	1088
PRY.C06.221S.05 NC							1322	423	463	1390	728	1322	1851	653	833	1390	728	1322
PRY.C06.221S.06 NC													1586	508	555	1668	874	1586
PRY.C08.221S.04 NC	1353	427	460	1462	768	1390	2038	725	941	1462	768	1390	2724	1024	1421	1462	768	1390
PRY.C08.221S.05 NC							1680	527	564	1838	966	1748	2366	826	1045	1838	966	1748
PRY.C08.221S.06 NC													1887	561	541	2342	1230	2227
PRY.C08.251S.04 NC	1816	586	659	1838	966	1748	2707	974	1284	1838	966	1748	3598	1362	1908	1838	966	1748
PRY.C08.251S.05 NC							2227	710	780	2342	1230	2227	3118	1098	1404	2342	1230	2227
PRY.C08.251S.06 NC													2606	814	865	2882	1513	2740
PRY.C08.281S.04 NC	2262	725	804	2342	1230	2227	3385	1213	1591	2342	1230	2227	4507	1702	2377	2342	1230	2227
PRY.C08.281S.05 NC							2872	930	1051	2882	1513	2740	3994	1419	1838	2882	1513	2740
PRY.C08.281S.06 NC													3367	1073	1179	3541	1860	3367
PRY.C1.281S.04 NC	2630	839	921	2766	1452	2630	3946	1411	1842	2766	1452	2630	5261	1984	2764	2766	1452	2630
PRY.C1.281S.05 NC							3206	1003	1065	3544	1861	3370	4521	1576	1986	3544	1861	3370
PRY.C1.281S.06 NC													3750	1150	1176	4355	2286	4141
PRY.C1.321S.04 NC	3535	1146	1295	3544	1861	3370	5261	1898	2505	3544	1861	3370	6988	2650	3715	3544	1861	3370
PRY.C1.321S.05 NC							4490	1472	1694	4355	2286	4141	6217	2224	2904	4355	2286	4141
PRY.C1.321S.06 NC													5098	1606	1727	5532	2904	5260
PRY.C1.351S.04 NC	4141	1320	1449	4355	2286	4141	6211	2222	2900	4355	2286	4141	8282	3123	4351	4355	2286	4141
PRY.C1.351S.05 NC							5092	1604	1724	5532	2904	5260	7163	2506	3175	5532	2904	5260
PRY.C1.351S.06 NC													5927	1823	1875	6832	3586	6496
PRY.C1.401S.04 NC	5591	1821	2073	5532	2904	5260	8303	3002	3974	5532	2904	5260	11016	4184	5875	5532	2904	5260
PRY.C1.401S.05 NC							7067	2320	2674	6832	3586	6496	9780	3501	4575	6832	3586	6496
PRY.C1.401S.06 NC													8138	2595	2848	8559	4493	8138
PRY.C2.401S.04 NC	6473	2064	2266	6808	3574	6473	9710	3474	4534	6808	3574	6473	12947	4883	6803	6808	3574	6473
PRY.C2.401S.05 NC							7963	2509	2697	8645	4538	8220	11200	3919	4965	8645	4538	8220
PRY.C2.401S.06 NC													9428	2941	3102	10508	5516	9992

Model	Air to Spring (4Bar)			Spring			Air to Spring (5Bar)			Spring			Air to Spring (6Bar)			Spring		
	0°	45°	90°	90°	45°	0°	0°	45°	90°	90°	45°	0°	0°	45°	90°	90°	45°	0°
PRY.C2.451S.04 NC	8220	2621	2877	8645	4538	8220	12330	4411	5758	8645	4538	8220	16441	6201	8638	8645	4538	8220
PRY.C2.451S.05 NC							10559	3433	3894	10508	5516	9992	14669	5223	6775	10508	5516	9992
PRY.C2.451S.06 NC													12330	3932	4316	12967	6807	12330
PRY.C3.451S.04 NC	9810	3127	3434	10317	5417	9810	14715	5263	6871	10317	5417	9810	19620	7399	10309	10317	5417	9810
PRY.C3.451S.05 NC							12263	3909	4292	12896	6771	12263	17168	6045	7730	12896	6771	12263
PRY.C3.451S.06 NC													14239	4428	4650	15976	8388	15191
PRY.C3.501S.04 NC	12043	3813	4138	12896	6771	12263	18120	6459	8397	12896	6771	12263	24196	9105	12655	12896	6771	12263
PRY.C3.501S.05 NC							15191	4842	5317	15976	8388	15191	21267	7489	9575	15976	8388	15191
PRY.C3.501S.06 NC													17346	5324	5452	20100	10553	19112
PRY.C3.561S.04 NC	15388	4928	5455	15976	8388	15191	23033	8257	10813	15976	8388	15191	30678	11586	16171	15976	8388	15191
PRY.C3.561S.05 NC							19112	6092	6689	20100	10553	19112	26757	9421	12047	20100	10553	19112
PRY.C3.561S.06 NC													23896	7842	9039	23108	12132	21973
PRY.C3.631S.04 NC	19809	6396	7177	20100	10553	19112	29539	10633	13997	20100	10553	19112	39269	14870	20816	20100	10553	19112
PRY.C3.631S.05 NC							23305	7191	7441	26656	13995	25346	33035	11428	14260	26656	13995	25346
PRY.C3.631S.06 NC													29191	9305	10217	30699	16118	29191
PRY.C4.631S.04 NC	21759	6584	6531	26135	13712	24851	33411	11658	14697	26135	13712	24851	45063	16732	22863	26135	13712	24851
PRY.C4.631S.05 NC							29131	9297	10196	30636	16074	29131	40783	14371	18362	30636	16074	29131
PRY.C4.631S.06 NC													33888	10566	11110	37888	19879	36027
PRY.C4.701S.04 NC	28512	9027	9762	30636	16074	29131	42922	15302	19861	30636	16074	29131	57333	21578	29961	30636	16074	29131
PRY.C4.701S.05 NC							36027	11497	12609	37888	19879	36027	50437	17773	22709	37888	19879	36027
PRY.C4.701S.06 NC													41280	12719	13078	47519	24932	45184
PRY.C4.801S.04 NC	39392	12963	14968	37888	19879	36027	58247	21173	28182	37888	19879	36027	77102	29384	41396	37888	19879	36027
PRY.C4.801S.05 NC							49089	16120	18551	47519	24932	45184	67944	24331	31765	47519	24932	45184
PRY.C4.801S.06 NC													56564	18052	19798	59487	31211	56564
PRY.C5.801S.04 NC	45246	14438	15836	47584	24968	45246	67869	24289	31691	47584	24968	45246	90492	34141	47546	47584	24968	45246
PRY.C5.801S.05 NC							55758	17606	18954	60321	31651	57357	78381	27457	34809	60321	31651	57357
PRY.C5.801S.06 NC													65955	20601	21742	73388	38508	69783
PRY.C5.901S.04 NC	57357	18302	20075	60321	31651	57357	86036	30791	40174	60321	31651	57357	114714	43279	60273	60321	31651	57357
PRY.C5.901S.05 NC							73610	23934	27106	73388	38508	69783	102289	36423	47205	73388	38508	69783
PRY.C5.901S.06 NC													86036	27454	30113	90481	47477	86036
PRY.C6.801S.04 NC	60764	19336	21267	63904	33585	60764	91146	32566	42560	63904	33585	60764	121528	45796	63853	63904	33585	60764
PRY.C6.801S.05 NC							74843	23555	25414	81050	42596	77068	105225	36785	46707	81050	42596	77068
PRY.C6.801S.06 NC													88036	27284	28630	99127	52097	94257
PRY.C6.901S.04 NC	77068	24524	26974	81050	42596	77068	115602	41304	53980	81050	42596	77068	154136	58084	80985	81050	42596	77068
PRY.C6.901S.05 NC							98413	31803	35902	99127	52097	94257	136946	48583	62908	99127	52097	94257
PRY.C6.901S.06 NC													113847	35815	38615	123420	64864	117357
PRY.C6.1001S.04 NC	96322	30893	34437	99127	52097	94257	143967	51640	67828	99127	52097	94257	191611	72387	101219	99127	52097	94257
PRY.C6.1001S.05 NC							120867	38872	43535	123420	64864	117357	168511	59620	76926	123420	64864	117357
PRY.C6.1001S.06 NC													142934	45483	50027	150319	79001	142934

The torque of the springs can be customized to your needs.

# Output Torque

## Output Torque of PY.C Series Actuator with Spring Return (NO)



Model	Air to Spring (4Bar)			Spring			Air to Spring (5Bar)			Spring			Air to Spring (6Bar)			Spring		
	90°	45°	0°	0°	45°	90°	90°	45°	0°	0°	45°	90°	90°	45°	0°	0°	45°	90°
PRY.C06.201S.04 NO	915	471	870	870	287	305	1221	660	1306	870	287	305	1526	850	1741	870	287	305
PRY.C06.201S.05 NO							1144	589	1088	1088	359	381	1449	778	1523	1088	359	381
PRY.C06.201S.06 NO													1368	701	1290	1322	436	463
PRY.C06.221S.04 NO	1101	562	1027	1088	359	381	1472	792	1556	1088	359	381	1843	1023	2084	1088	359	381
PRY.C06.221S.05 NO							1390	715	1322	1322	436	463	1761	945	1851	1322	436	463
PRY.C06.221S.06 NO													1668	858	1586	1586	523	555
PRY.C08.251S.04 NO	1436	735	1353	1390	459	487	1916	1033	2038	1390	459	487	2397	1332	2724	1390	459	487
PRY.C08.251S.05 NO							1798	921	1699	1729	572	605	2278	1220	2385	1729	572	605
PRY.C08.251S.06 NO													2104	1055	1887	2227	736	780
PRY.C08.251S.04 NO	1892	980	1835	1729	572	605	2517	1368	2726	1729	572	605	3141	1756	3617	1729	572	605
PRY.C08.251S.05 NO							2342	1204	2227	2227	736	780	2967	1591	3118	2227	736	780
PRY.C08.251S.06 NO													2787	1422	2606	2740	906	959
PRY.C08.281S.04 NO	2367	1219	2262	2227	736	780	3153	1707	3385	2227	736	780	3940	2196	4507	2227	736	780
PRY.C08.281S.05 NO							2974	1538	2872	2740	906	959	3761	2027	3994	2740	906	959
PRY.C08.281S.06 NO													3541	1819	3367	3367	1113	1179
PYR.C1.281S.04 NO	2766	1422	2630	2630	869	921	3688	1994	3946	2630	869	921	4610	2567	5261	2630	869	921
PRY.C1.281S.05 NO							3429	1750	3205	3371	1114	1180	4351	2322	4520	3371	1114	1180
PRY.C1.281S.06 NO													4051	2039	3663	4228	1397	1480
PRY.C1.321S.04 NO	3659	1893	3534	3371	1114	1180	4869	2645	5260	3371	1114	1180	6079	3396	6987	3371	1114	1180
PRY.C1.321S.05 NO							4569	2361	4403	4228	1397	1480	5779	3113	6130	4228	1397	1480
PRY.C1.321S.06 NO													5404	2759	5058	5300	1751	1855
PRY.C1.351S.04 NO	4324	2209	4054	4228	1397	1480	5776	3111	6124	4228	1397	1480	7227	4013	8195	4228	1397	1480
PRY.C1.351S.05 NO							5400	2757	5052	5300	1751	1855	6851	3658	7123	5300	1751	1855
PRY.C1.351S.06 NO													6432	3263	5926	6497	2147	2274
PRY.C1.401S.04 NO	5750	2974	5551	5300	1751	1855	7651	4155	8263	5300	1751	1855	9552	5336	10976	5300	1751	1855
PRY.C1.401S.05 NO							7232	3759	7066	6497	2147	2274	9133	4941	9779	6497	2147	2274
PRY.C1.401S.06 NO													8559	4398	8138	8138	2689	2848
PRY.C2.401S.04 NO	6808	3499	6473	6473	2139	2266	9076	4908	9710	6473	2139	2266	11345	6318	12947	6473	2139	2266
PRY.C2.401S.05 NO							8487	4352	8028	8156	2695	2855	10756	5762	11264	8156	2695	2855
PRY.C2.401S.06 NO													10110	5153	9420	10000	3304	3500

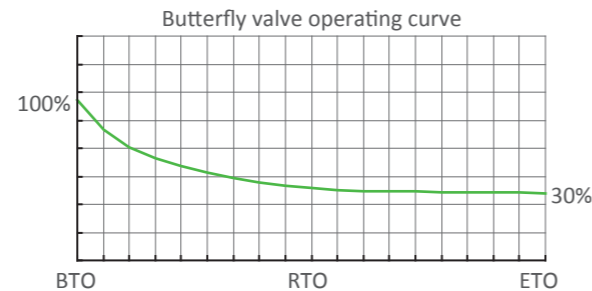
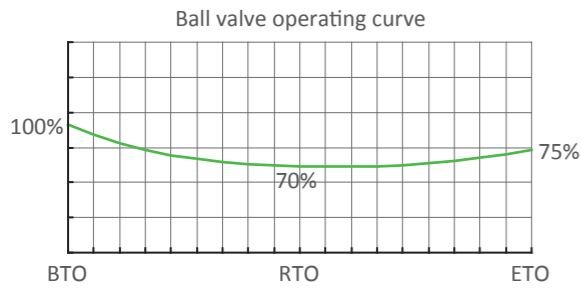
Model	Air to Spring (4Bar)			Spring			Air to Spring (5Bar)			Spring			Air to Spring (6Bar)			Spring		
	90°	45°	0°	0°	45°	90°	90°	45°	0°	0°	45°	90°	90°	45°	0°	0°	45°	90°
PRY.C2.451S.04 NO	8667	4464	8285	8156	2695	2855	11548	6254	12395	8156	2695	2855	14429	8044	16505	8156	2695	2855
PRY.C2.451S.05 NO							10903	5645	10551	10000	3304	3500	13783	7435	14661	10000	3304	3500
PRY.C2.451S.06 NO													12967	6665	12330	12330	4074	4316
PRY.C3.451S.04 NO	10317	5302	9810	9810	3242	3434	13755	7438	14715	9810	3242	3434	17192	9574	19620	9810	3242	3434
PRY.C3.451S.05 NO							12896	6627	12263	12263	4052	4292	16334	8763	17168	12263	4052	4292
PRY.C3.451S.06 NO													15309	7796	14239	15191	5020	5317
PRY.C3.501S.04 NO	12742	6532	12043	12263	4052	4292	17001	9178	18120	12263	4052	4292	21259	11824	24196	12263	4052	4292
PRY.C3.501S.05 NO							15976	8210	15191	15191	5020	5317	20234	10856	21267	15191	5020	5317
PRY.C3.501S.06 NO													19144	9826	18152	18307	6050	6407
PRY.C3.561S.04 NO	16114	8296	15388	15191	5020	5317	21472	11625	23033	15191	5020	5317	26830	14954	30678	15191	5020	5317
PRY.C3.561S.05 NO							20381	10595	19917	18307	6050	6407	25739	13924	27562	18307	6050	6407
PRY.C3.561S.06 NO													24456	12713	23896	21973	7261	7690
PRY.C3.631S.04 NO	19587	9687	16948	21973	7261	7690	26406	13924	26678	21973	7261	7690	33225	18161	36408	21973	7261	7690
PRY.C3.631S.05 NO							25225	12810	23305	25346	8376	88718	32044	17047	33035	25346	8376	8871
PRY.C3.631S.06 NO													30699	15776	29191	29191	9646	10217
PRY.C4.631S.04 NO	23968	12090	21759	24851	8206	8698	32134	17164	33411	24851	8206	8698	40300	22239	45063	24851	8206	8698
PRY.C4.631S.05 NO							30375	15505	28386	29876	9866	10457	38542	20579	40038	29876	9866	10457
PRY.C4.631S.06 NO													36389	18548	33888	36027	11897	12609
PRY.C4.701S.04 NO	29941	15235	27767	29876	9866	10457	40041	21511	42177	29876	9866	10457	50140	27786	56588	29876	9866	10457
PRY.C4.701S.05 NO							37888	19480	36027	36027	11897	12609	47988	25755	50437	36027	11897	12609
PRY.C4.701S.06 NO													44783	22731	41280	45184	14921	15814
PRY.C4.801S.04 NO	40247	20945	39392	36027	11897	12609	53461	29156	58247	36027	11897	12609	66675	37366	77102	36027	11897	12609
PRY.C4.801S.05 NO							50256	26132	49090	45184	14921	15814	63470	34342	67945	45184	14921	15814
PRY.C4.801S.06 NO													59487	30584	56564	56564	18679	19798
PYR.C5.801S.04 NO	47584	24463	45246	45246	14943	15836	63439	34314	67869	45246	14943	15836	79294	44165	90492	45246	14943	15836
PRY.C5.801S.05 NO							59200	30314	55758	57357	18943	20075	75055	40166	78381	57357	18943	20075
PRY.C5.801S.06 NO													70706	36062	65956	69782	23046	24424
PRY.C5.901S.04 NO	60321	31011	57357	57357	18943	20075	80420	43499	86036	57357	18943	20075	100518	55987	114714	57357	18943	20075
PRY.C5.901S.05 NO							76071	39396	73611	69782	23046	24424	96170	51884	102290	69782	23046	24424
PRY.C5.901S.06 NO													90481	46516	86036	86036	28414	30113
PRY.C6.801S.04 NO	63904	32823	60764	60764	20097	21267	85197	46054	91146	60764	20097	21267	106489	59284	121528	60764	20097	21267
PRY.C6.801S.05 NO							79490	40661	74843	77068	25490	26974	100783	53891	105225	77068	25490	26974
PRY.C6.801S.06 NO													94040	47519	85958	96335	31862	33717
PRY.C6.901S.04 NO	81050	41630	77068	77068	25490	26974	108055	58410	115602	77068	25490	26974	135061	75190	154136	77068	25490	26974
PRY.C6.901S.05 NO							101312	52038	96335	96335	31862	33717	128318	68818	134869	96335	31862	33717
PRY.C6.901S.06 NO													120346	61284	112092	119112	39396	41689
PRY.C6.1001S.04 NO	99847	51127	94244	96335	31862	33717	133238	71875	141889	96335	31862	33717	166629	92622	189533	96335	31862	33717
PRY.C6.1001S.05 NO							125266	64341	119112	119112	39396	41689	158657	85089	166756	119112	39396	41689
PRY.C6.1001S.06 NO													150319	77210	142934	142934	47275	50027

The torque of the springs can be customized to your needs.

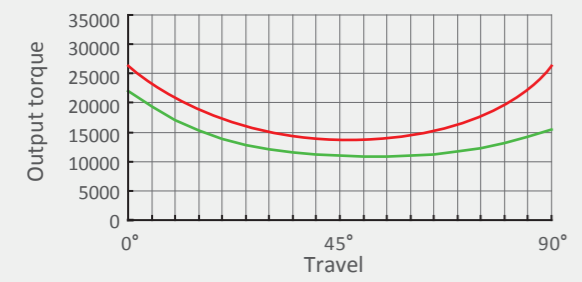


# Sizing

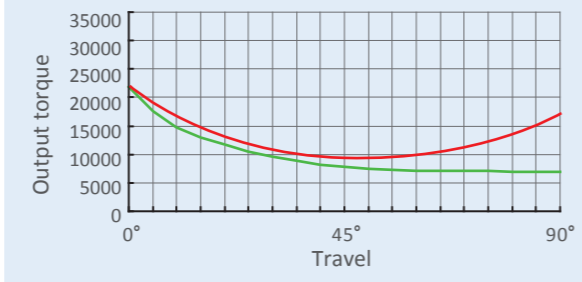
For optimum sizing of actuators it is useful to know the complete torque requirements of the valve. Specifically, these are the breakaway, the running and the setting torque for both pivoting directions.



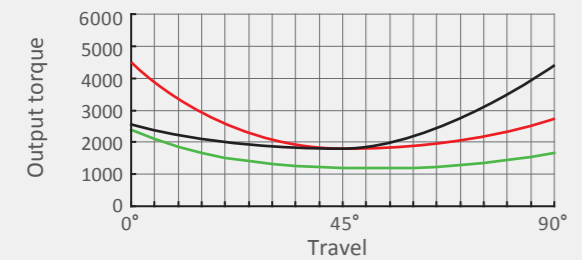
■ Spring return operating curve    ■ Air to spring operating curve    ■ Ball valve (butterfly valve) operating curve



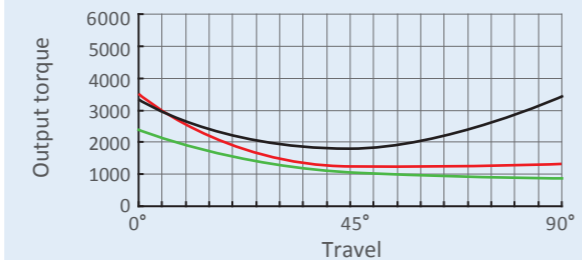
BTO of the ball valve is: 22000Nm  
Air Supply: 4 Bar  
Air Failure Position: Lock  
Sizing: PRY.B3.561D



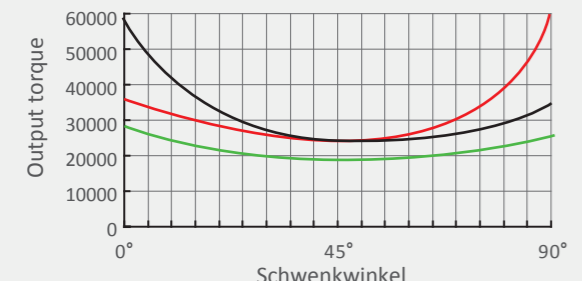
BTO of the butterfly valve is: 22000Nm  
Air Supply: 4 Bar  
Air Failure Position: Lock  
Sizing: PRY.C3.501D



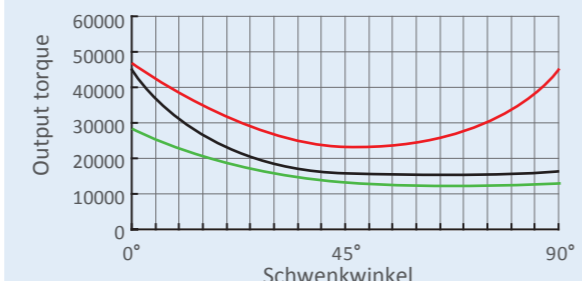
BTO of the ball valve is: 2400Nm  
Air Supply: 4 Bar  
Air Failure Position: Close  
Sizing: PRY.B1.351S.04



BTO of the butterfly valve is: 2400Nm  
Air Supply: 4 Bar  
Air Failure Position: Close  
Sizing: PRY.C1.321S.04



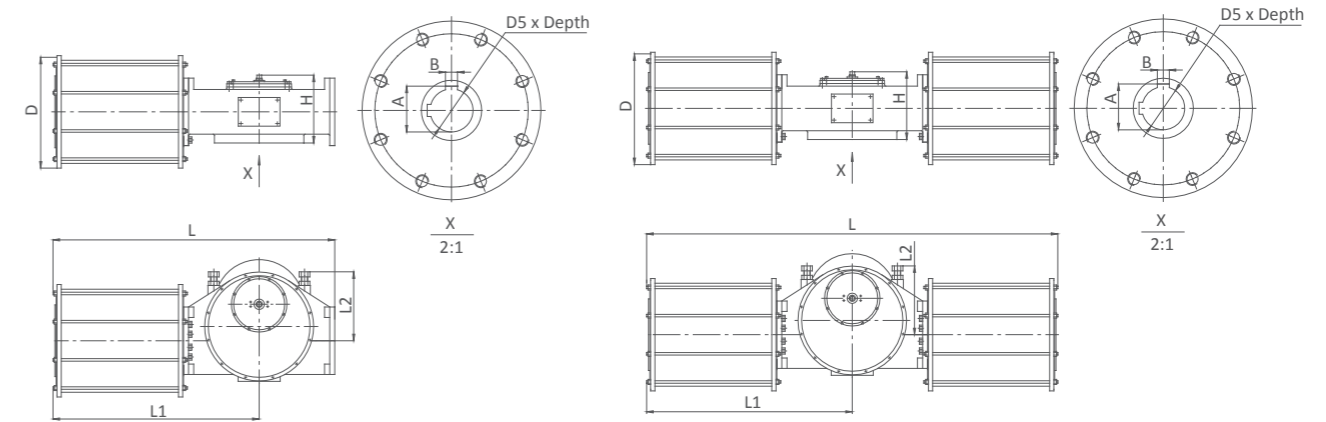
BTO of the ball valve is: 29000Nm  
Air Supply: 4 Bar  
Air Failure Position: Open  
Sizing: PRY.B5.901S.04



BTO of the butterfly valve is: 29000Nm  
Air Supply: 4 Bar  
Air Failure Position: Open  
Sizing: PRY.C5.801S.04

# Dimension

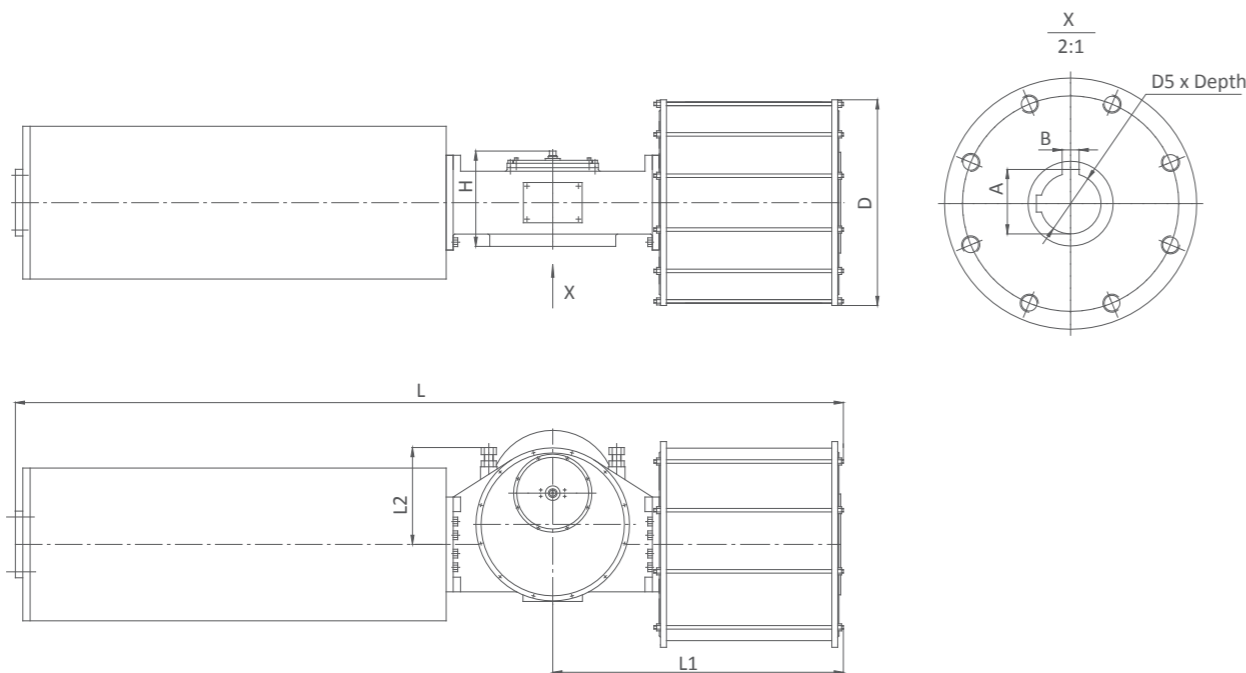
## Dimension of PRY.B(C) Series Double Acting Actuator



Model	L	L1	L2	H	D	D5	A	B	Connecting Flange	Air Connection
									ISO 5211	
PRY.B/C06.201D	675	505	180	212	225*225	Ø48*65	51.8	14	F14	3/8"G(NPT)
PRY.B/C08.221D	815	605	200	237	250*250	Ø60*100	64.4	18	F16	1/2"G(NPT)
PRY.B08.251D	815	605	200	237	280*280	Ø60*100	64.4	18	F16	1/2"G(NPT)
PRY.B/C1.281D	925	680	225	246	310*310	Ø72*120	76.9	20	F25/F16	1/2"G(NPT)
PRY.B/C1.321D	905	660	225	246	Ø395	Ø72*120	76.9	20	F25/F16	1/2"G(NPT)
PRY.B1.351D	905	660	225	246	Ø430	Ø72*120	76.9	20	F25/F16	3/4"G(NPT)
PRY.B/C2.351D	1055	775	285	269	Ø430	Ø100*150	106.4	28	F30/F25	3/4"G(NPT)
PRY.B/C2.401D	1055	775	285	269	Ø500	Ø100*150	106.4	28	F30/F25	1"G(NPT)
PRY.B/C2.451D	1055	775	285	269	Ø550	Ø100*150	106.4	28	F30/F25	1"G(NPT)
PRY.B/C3.451D	1250	915	330	310	Ø550	Ø160*200	169.4	40	F35/F30	1"G(NPT)
PRY.B/C3.501D	1250	915	330	310	Ø600	Ø160*200	169.4	40	F35/F30	1 1/4"G(NPT)
PRY.B/C3.561D	1250	915	330	310	Ø660	Ø160*200	169.4	40	F35/F30	1 1/4"G(NPT)
PRY.B3.601D	1250	915	330	310	Ø700	Ø160*200	169.4	40	F35/F30	1 1/4"G(NPT)
PRY.C4.561D	1450	1050	412	340	Ø660	Ø180*220	190.4	45	F40	1 1/4"G(NPT)
PRY.B/C4.601D	1450	1050	412	340	Ø700	Ø180*220	190.4	45	F40	1 1/4"G(NPT)
PRY.B/C4.631D	1450	1050	412	340	Ø730	Ø180*220	190.4	45	F40	1 1/2"G(NPT)
PRY.B/C4.701D	1450	1050	412	340	Ø810	Ø180*220	190.4	45	F40	1 1/2"G(NPT)
PRY.B4.801D	1450	1050	412	340	Ø910	Ø180*220	190.4	45	F40	1 1/2"G(NPT)
PRY.B/C4.502.D	2120	1050	412	340	Ø600	Ø180*220	190.4	45	F40	1 1/4"G(NPT)
PRY.B4.562.D	2120	1050	412	340	Ø660	Ø180*220	190.4	45	F40	1 1/4"G(NPT)
PRY.B/C5.701D	1690	1230	486	420	Ø810	Ø220*250	231.4	50	F48/F40	1 1/2"G(NPT)
PRY.B/C5.801D	1690	1230	486	420	Ø910	Ø220*250	231.4	50	F48/F40	1 1/2"G(NPT)
PRY.B/C5.901D	1690	1230	486	420	Ø1010	Ø220*250	231.4	50	F48/F40	2"G(NPT)
PRY.B5.1001D	1690	1230	486	420	Ø1110	Ø220*250	231.4	50	F48/F40	2"G(NPT)
PRY.B/C5.562.D	2456	1230	486	420	Ø660	Ø220*250	231.4	50	F48/F40	1 1/4"G(NPT)
PRY.B/C5.602.D	2456	1230	486	420	Ø700	Ø220*250	231.4	50	F48/F40	1 1/4"G(NPT)
PRY.B/C5.632.D	2456	1230	486	420	Ø730	Ø220*250	231.4	50	F48/F40	1 1/2"G(NPT)
PRY.B5.702.D	2456	1230	486	420	Ø810	Ø220*250	231.4	50	F48/F40	1 1/2"G(NPT)
PRY.C6.801D	2145	1555	658	490	Ø910	Ø280*320	292.4	63	F60/F48	1 1/2"G(NPT)
PRY.B/C6.901D	2145	1555	658	490	Ø1010	Ø280*320	292.4	63	F60/F48	2"G(NPT)
PRY.B/C6.1001D	2145	1555	658	490	Ø1110	Ø280*320	292.4	63	F60/F48	2"G(NPT)
PRY.B/C6.702.D	3100	1555	658	490	Ø810	Ø280*320	292.4	63	F60/F48	1 1/2"G(NPT)
PRY.B/C6.802.D	3100	1555	658	490	Ø910	Ø280*320	292.4	63	F60/F48	1 1/2"G(NPT)
PRY.B6.902.D	3100	1555	658	490	Ø1010	Ø280*320	292.4	63	F60/F48	2"G(NPT)

The dimension of D5 can be customized according to your requirements.

## Dimension of PRY.B NC(O) Series Spring Return Actuator

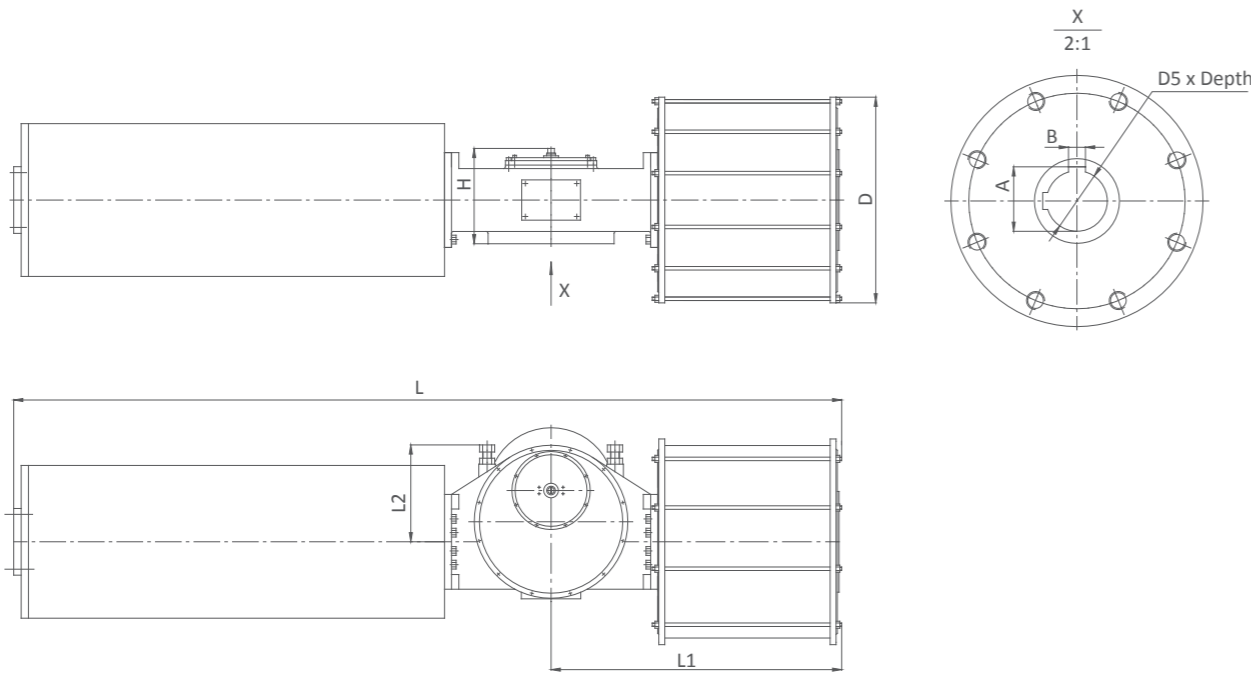


Model	L	L1	L2	H	D	D5 x Depth	A	B	Connecting Flange	Air Connection
									ISO5211	
PRY.B06.201S.04	1304	505	180	214	□225	∅48x65	51.8	14	F14	3/8"G(NPT)
PRY.B06.201S.05	1354	505	180	214	□225	∅48x65	51.8	14	F14	3/8"G(NPT)
PRY.B06.201S.06	1374	505	180	214	□225	∅48x65	51.8	14	F14	3/8"G(NPT)
PRY.B06.221S.04	1354	515	180	214	□250	∅48x65	51.8	14	F14	1/2"G(NPT)
PRY.B06.221S.05	1374	515	180	214	□250	∅48x65	51.8	14	F14	1/2"G(NPT)
PRY.B06.221S.06	1324	515	180	214	□250	∅48x65	51.8	14	F14	1/2"G(NPT)
PRY.B08.221S.04	1458	605	200	238	□250	∅60x100	64.4	18	F16	1/2"G(NPT)
PRY.B08.221S.05	1488	605	200	238	□250	∅60x100	64.4	18	F16	1/2"G(NPT)
PRY.B08.221S.06	1528	605	200	238	□250	∅60x100	64.4	18	F16	1/2"G(NPT)
PRY.B08.251S.04	1488	605	200	238	□280	∅60x100	64.4	18	F16	1/2"G(NPT)
PRY.B08.251S.05	1528	605	200	238	□280	∅60x100	64.4	18	F16	1/2"G(NPT)
PRY.B08.251S.06	1528	605	200	238	□280	∅60x100	64.4	18	F16	1/2"G(NPT)
PRY.B08.281S.04	1528	605	200	238	□310	∅60x100	64.4	18	F16	1/2"G(NPT)
PRY.B08.281S.05	1528	605	200	238	□310	∅60x100	64.4	18	F16	1/2"G(NPT)
PRY.B08.281S.06	1558	605	200	238	□310	∅60x100	64.4	18	F16	1/2"G(NPT)
PRY.B1.281S.04	1660	680	225	245	□310	∅72x120	76.9	20	F25/F16	1/2"G(NPT)
PRY.B1.281S.05	1690	680	225	245	□310	∅72x120	76.9	20	F25/F16	1/2"G(NPT)
PRY.B1.281S.06	1710	680	225	245	□310	∅72x120	76.9	20	F25/F16	1/2"G(NPT)
PRY.B1.321S.04	1670	660	225	245	∅395	∅72x120	76.9	20	F25/F16	1/2"G(NPT)
PRY.B1.321S.05	1690	660	225	245	∅395	∅72x120	76.9	20	F25/F16	1/2"G(NPT)
PRY.B1.321S.06	1710	660	225	245	∅395	∅72x120	76.9	20	F25/F16	1/2"G(NPT)
PRY.B1.351S.04	1690	660	225	245	∅430	∅72x120	76.9	20	F25/F16	3/4"G(NPT)
PRY.B1.351S.05	1710	660	225	245	∅430	∅72x120	76.9	20	F25/F16	3/4"G(NPT)
PRY.B1.351S.06	1730	660	225	245	∅430	∅72x120	76.9	20	F25/F16	3/4"G(NPT)

Model	L	L1	L2	H	D	D5 x Depth	A	B	Connecting Flange	Air Connection
									ISO5211	
PRY.B1.401S.04	1710	660	225	245	∅500	∅72x120	76.9	20	F25/F16	1"G(NPT)
PRY.B1.401S.05	1730	660	225	245	∅500	∅72x120	76.9	20	F25/F16	1"G(NPT)
PRY.B1.401S.06	1770	660	225	245	∅500	∅72x120	76.9	20	F25/F16	1"G(NPT)
PRY.B2.401S.04	1915	775	285	269	∅500	∅100x150	106.4	28	F30/F25	1"G(NPT)
PRY.B2.401S.05	1965	775	285	269	∅500	∅100x150	106.4	28	F30/F25	1"G(NPT)
PRY.B2.401S.06	2025	775	285	269	∅500	∅100x150	106.4	28	F30/F25	1"G(NPT)
PRY.B2.451S.04	1965	775	285	269	∅550	∅100x150	106.4	28	F30/F25	1"G(NPT)
PRY.B2.451S.05	2025	775	285	269	∅550	∅100x150	106.4	28	F30/F25	1"G(NPT)
PRY.B2.451S.06	2045	775	285	269	∅550	∅100x150	106.4	28	F30/F25	1"G(NPT)
PRY.B3.451S.04	2223	915	345	310	∅550	∅160x200	169.4	40	F35/F30	1"G(NPT)
PRY.B3.451S.05	2243	915	345	310	∅550	∅160x200	169.4	40	F35/F30	1"G(NPT)
PRY.B3.451S.06	2263	915	345	310	∅550	∅160x200	169.4	40	F35/F30	1"G(NPT)
PRY.B3.501S.04	2243	915	345	310	∅600	∅160x200	169.4	40	F35/F30	1 1/4"G(NPT)
PRY.B3.501S.05	2263	915	345	310	∅600	∅160x200	169.4	40	F35/F30	1 1/4"G(NPT)
PRY.B3.501S.06	2323	915	345	310	∅600	∅160x200	169.4	40	F35/F30	1 1/4"G(NPT)
PRY.B3.561S.04	2263	915	345	310	∅660	∅160x200	169.4	40	F35/F30	1 1/4"G(NPT)
PRY.B3.561S.05	2323	915	345	310	∅660	∅160x200	169.4	40	F35/F30	1 1/4"G(NPT)
PRY.B3.561S.06	2383	915	345	310	∅660	∅160x200	169.4	40	F35/F30	1 1/4"G(NPT)
PRY.B3.631S.04	2383	915	345	310	∅730	∅160x200	169.4	40	F35/F30	1 1/2"G(NPT)
PRY.B3.631S.05	2383	915	345	310	∅730	∅160x200	169.4	40	F35/F30	1 1/2"G(NPT)
PRY.B3.631S.06	2423	915	345	310	∅730	∅160x200	169.4	40	F35/F30	1 1/2"G(NPT)
PRY.B4.631S.04	2784	1050	412	340	∅730	∅180x220	190.4	45	F40	1 1/2"G(NPT)
PRY.B4.631S.05	2784	1050	412	340	∅730	∅180x220	190.4	45	F40	1 1/2"G(NPT)
PRY.B4.631S.06	2924	1050	412	340	∅730	∅180x220	190.4	45	F40	1 1/2"G(NPT)
PRY.B4.701S.04	2784	1050	412	340	∅810	∅180x220	190.4	45	F40	1 1/2"G(NPT)
PRY.B4.701S.05	2924	1050	412	340	∅810	∅180x220	190.4	45	F40	1 1/2"G(NPT)
PRY.B4.701S.06	3014	1050	412	340	∅810	∅180x220	190.4	45	F40	1 1/2"G(NPT)
PRY.B4.801S.04	2924	1050	412	340	∅910	∅180x220	190.4	45	F40	1 1/2"G(NPT)
PRY.B4.801S.05	3014	1050	412	340	∅910	∅180x220	190.4	45	F40	1 1/2"G(NPT)
PRY.B4.801S.06	3100	1050	412	340	∅910	∅180x220	190.4	45	F40	1 1/2"G(NPT)
PRY.B5.801S.04	3273	1230	486	420	∅910	∅220x250	231.4	50	F48/F40	1 1/2"G(NPT)
PRY.B5.801S.05	3333	1230	486	420	∅910	∅220x250	231.4	50	F48/F40	1 1/2"G(NPT)
PRY.B5.801S.06	3453	1230	486	420	∅910	∅220x250	231.4	50	F48/F40	1 1/2"G(NPT)
PRY.B5.901S.04	3333	1230	486	420	∅1010	∅220x250	231.4	50	F48/F40	2"G(NPT)
PRY.B5.901S.05	3453	1230	486	420	∅1010	∅220x250	231.4	50	F48/F40	2"G(NPT)
PRY.B5.901S.06	3613	1230	486	420	∅1010	∅220x250	231.4	50	F48/F40	2"G(NPT)
PRY.B6.801S.04	4070	1555	658	490	∅910	∅280x320	292.4	63	F60/F48	1 1/2"G(NPT)
PRY.B6.801S.05	4200	1555	658	490	∅910	∅280x320	292.4	63	F60/F48	1 1/2"G(NPT)
PRY.B6.801S.06	4260	1555	658	490	∅910	∅280x320	292.4	63	F60/F48	1 1/2"G(NPT)
PRY.B6.901S.04	4200	1555	658	490	∅1010	∅280x320	292.4	63	F60/F48	2"G(NPT)
PRY.B6.901S.05	4260	1555	658	490	∅1010	∅280x320	292.4	63	F60/F48	2"G(NPT)
PRY.B6.901S.06	4320	1555	658	490	∅1010	∅280x320	292.4	63	F60/F48	2"G(NPT)
PRY.B6.1001S.04	4260	1555	658	490	∅1110	∅280x320	292.4	63	F60/F48	2"G(NPT)
PRY.B6.1001S.05	4320	1555	658	490	∅1110	∅280x320	292.4	63	F60/F48	2"G(NPT)
PRY.B6.1001S.06	4380	1555	658	490	∅1110	∅280x320	292.4	63	F60/F48	2"G(NPT)

The dimension of D5 can be customized according to your requirements.

## Dimension of PRY.C (NC) Series Spring Return Actuator

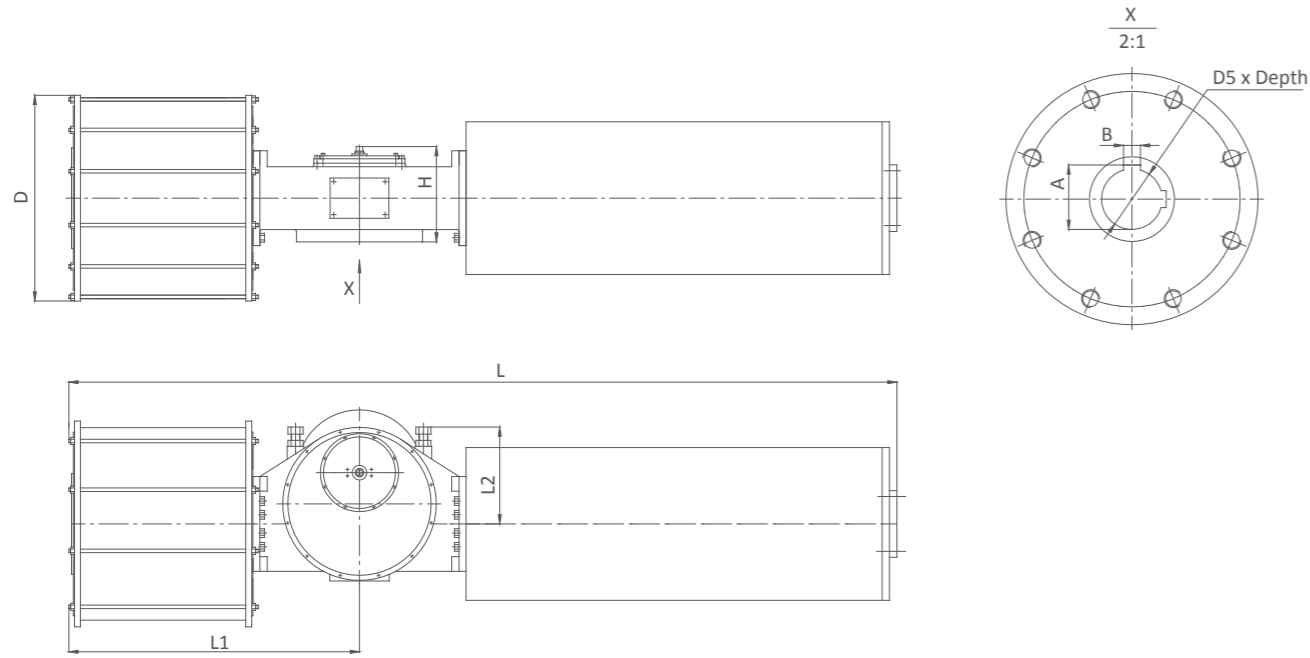


Model	L	L1	L2	H	D	D5 x Depth	A	B	Connecting Flange	Air Connection
									ISO5211	
	mm									
PRY.C06.201S.04 NC	1323	505	180	214	□225	∅48x65	51.8	14	F14	3/8"G(NPT)
PRY.C06.201S.05 NC	1343	505	180	214	□225	∅48x65	51.8	14	F14	3/8"G(NPT)
PRY.C06.201S.06 NC	1383	505	180	214	□225	∅48x65	51.8	14	F14	3/8"G(NPT)
PRY.C06.221S.04 NC	1343	515	180	214	□250	∅48x65	51.8	14	F14	1/2"G(NPT)
PRY.C06.221S.05 NC	1383	515	180	214	□250	∅48x65	51.8	14	F14	1/2"G(NPT)
PRY.C06.221S.06 NC	1423	515	180	214	□250	∅48x65	51.8	14	F14	1/2"G(NPT)
PRY.C08.221S.04 NC	1487	605	200	238	□250	∅60x100	64.4	18	F16	1/2"G(NPT)
PRY.C08.221S.05 NC	1507	605	200	238	□250	∅60x100	64.4	18	F16	1/2"G(NPT)
PRY.C08.221S.06 NC	1527	605	200	238	□250	∅60x100	64.4	18	F16	1/2"G(NPT)
PRY.C08.251S.04 NC	1507	605	200	238	□280	∅60x100	64.4	18	F16	1/2"G(NPT)
PRY.C08.251S.05 NC	1527	605	200	238	□280	∅60x100	64.4	18	F16	1/2"G(NPT)
PRY.C08.251S.06 NC	1567	605	200	238	□280	∅60x100	64.4	18	F16	1/2"G(NPT)
PRY.C08.281S.04 NC	1527	605	200	238	□310	∅60x100	64.4	18	F16	1/2"G(NPT)
PRY.C08.281S.05 NC	1567	605	200	238	□310	∅60x100	64.4	18	F16	1/2"G(NPT)
PRY.C08.281S.06 NC	1597	605	200	238	□310	∅60x100	64.4	18	F16	1/2"G(NPT)
PRY.C1.281S.04 NC	1740	680	225	246	□310	∅72x120	76.9	20	F25/F16	1/2"G(NPT)
PRY.C1.281S.05 NC	1720	680	225	246	□310	∅72x120	76.9	20	F25/F16	1/2"G(NPT)
PRY.C1.281S.06 NC	1720	680	225	246	□310	∅72x120	76.9	20	F25/F16	1/2"G(NPT)
PRY.C1.321S.04 NC	1700	660	225	246	∅395	∅72x120	76.9	20	F25/F16	1/2"G(NPT)
PRY.C1.321S.05 NC	1700	660	225	246	∅395	∅72x120	76.9	20	F25/F16	1/2"G(NPT)
PRY.C1.321S.06 NC	1720	660	225	246	∅395	∅72x120	76.9	20	F25/F16	1/2"G(NPT)
PRY.C1.351S.04 NC	1700	660	225	246	∅430	∅72x120	76.9	20	F25/F16	3/4"G(NPT)
PRY.C1.351S.05 NC	1720	660	225	246	∅430	∅72x120	76.9	20	F25/F16	3/4"G(NPT)
PRY.C1.351S.06 NC	1800	660	225	246	∅430	∅72x120	76.9	20	F25/F16	3/4"G(NPT)

Model	L	L1	L2	H	D	D5 x Depth	A	B	Connecting Flange	Air Connection
									ISO5211	
	mm									
PRY.C1.401S.04 NC	1720	660	225	246	∅500	∅72x120	76.9	20	F25/F16	1"G(NPT)
PRY.C1.401S.05 NC	1750	660	225	246	∅500	∅72x120	76.9	20	F25/F16	1"G(NPT)
PRY.C1.401S.06 NC	1762	660	225	246	∅500	∅72x120	76.9	20	F25/F16	1"G(NPT)
PRY.C2.401S.04 NC	1961	775	285	267	∅500	∅100x150	106.4	28	F30/F25	1"G(NPT)
PRY.C2.401S.05 NC	1961	775	285	267	∅500	∅100x150	106.4	28	F30/F25	1"G(NPT)
PRY.C2.401S.06 NC	1991	775	285	267	∅500	∅100x150	106.4	28	F30/F25	1"G(NPT)
PRY.C2.451S.04 NC	1961	775	285	267	∅550	∅100x150	106.4	28	F30/F25	1"G(NPT)
PRY.C2.451S.05 NC	1991	775	285	267	∅550	∅100x150	106.4	28	F30/F25	1"G(NPT)
PRY.C2.451S.06 NC	2041	775	285	267	∅550	∅100x150	106.4	28	F30/F25	1"G(NPT)
PRY.C3.451S.04 NC	2231	915	345	310	∅550	∅160x200	169.4	40	F35/F30	1"G(NPT)
PRY.C3.451S.05 NC	2251	915	345	310	∅550	∅160x200	169.4	40	F35/F30	1"G(NPT)
PRY.C3.451S.06 NC	2351	915	345	310	∅550	∅160x200	169.4	40	F35/F30	1"G(NPT)
PRY.C3.501S.04 NC	2251	915	345	310	∅600	∅160x200	169.4	40	F35/F30	1 1/4"G(NPT)
PRY.C3.501S.05 NC	2351	915	345	310	∅600	∅160x200	169.4	40	F35/F30	1 1/4"G(NPT)
PRY.C3.501S.06 NC	2401	915	345	310	∅600	∅160x200	169.4	40	F35/F30	1 1/4"G(NPT)
PRY.C3.561S.04 NC	2351	915	345	310	∅660	∅160x200	169.4	40	F35/F30	1 1/4"G(NPT)
PRY.C3.561S.05 NC	2401	915	345	310	∅660	∅160x200	169.4	40	F35/F30	1 1/4"G(NPT)
PRY.C3.561S.06 NC	2451	915	345	310	∅660	∅160x200	169.4	40	F35/F30	1 1/4"G(NPT)
PRY.C3.631S.04 NC	2401	915	345	310	∅730	∅160x200	169.4	40	F35/F30	1 1/2"G(NPT)
PRY.C3.631S.05 NC	2511	915	345	310	∅730	∅160x200	169.4	40	F35/F30	1 1/2"G(NPT)
PRY.C3.631S.06 NC	2591	915	345	310	∅730	∅160x200	169.4	40	F35/F30	1 1/2"G(NPT)
PRY.C4.631S.04 NC	2751	1050	412	340	∅730	∅180x220	190.4	45	F40	1 1/2"G(NPT)
PRY.C4.631S.05 NC	2831	1050	412	340	∅730	∅180x220	190.4	45	F40	1 1/2"G(NPT)
PRY.C4.631S.06 NC	2911	1050	412	340	∅730	∅180x220	190.4	45	F40	1 1/2"G(NPT)
PRY.C4.701S.04 NC	2831	1050	412	340	∅810	∅180x220	190.4	45	F40	1 1/2"G(NPT)
PRY.C4.701S.05 NC	2911	1050	412	340	∅810	∅180x220	190.4	45	F40	1 1/2"G(NPT)
PRY.C4.701S.06 NC	2951	1050	412	340	∅810	∅180x220	190.4	45	F40	1 1/2"G(NPT)
PRY.C4.801S.04 NC	2911	1050	412	340	∅910	∅180x220	190.4	45	F40	1 1/2"G(NPT)
PRY.C4.801S.05 NC	2951	1050	412	340	∅910	∅180x220	190.4	45	F40	1 1/2"G(NPT)
PRY.C4.801S.06 NC	3121	1050	412	340	∅910	∅180x220	190.4	45	F40	1 1/2"G(NPT)
PRY.C5.801S.04 NC	3273	1230	486	420	∅910	∅220x250	231.4	50	F48/F40	1 1/2"G(NPT)
PRY.C5.801S.05 NC	3493	1230	486	420	∅910	∅220x250	231.4	50	F48/F40	1 1/2"G(NPT)
PRY.C5.801S.06 NC	3613	1230	486	420	∅910	∅220x250	231.4	50	F48/F40	1 1/2"G(NPT)
PRY.C5.901S.04 NC	3493	1230	486	420	∅1010	∅220x250	231.4	50	F48/F40	2"G(NPT)
PRY.C5.901S.05 NC	3613	1230	486	420	∅1010	∅220x250	231.4	50	F48/F40	2"G(NPT)
PRY.C5.901S.06 NC	3773	1230	486	420	∅1010	∅220x250	231.4	50	F48/F40	2"G(NPT)
PRY.C6.801S.04 NC	4050	1555	658	490	∅910	∅280x320	292.4	63	F60/F48	1 1/2"G(NPT)
PRY.C6.801S.05 NC	4310	1555	658	490	∅910	∅280x320	292.4	63	F60/F48	1 1/2"G(NPT)
PRY.C6.801S.06 NC	4320	1555	658	490	∅910	∅280x320	292.4	63	F60/F48	1 1/2"G(NPT)
PRY.C6.901S.04 NC	4310	1555	658	490	∅1010	∅280x320	292.4	63	F60/F48	2"G(NPT)
PRY.C6.901S.05 NC	4320	1555	658	490	∅1010	∅280x320	292.4	63	F60/F48	2"G(NPT)
PRY.C6.901S.06 NC	4430	1555	658	490	∅1010	∅280x320	292.4	63	F60/F48	2"G(NPT)
PRY.C6.1001S.04 NC	4320	1555	658	490	∅1110	∅280x320	292.4	63	F60/F48	2"G(NPT)
PRY.C6.1001S.05 NC	4430	1555	658	490	∅1110	∅280x320	292.4	63	F60/F48	2"G(NPT)
PRY.C6.1001S.06 NC	4600	1555	658	490	∅1110	∅280x320	292.4	63	F60/F48	2"G(NPT)

The dimension of D5 can be customized according to your requirements.

## Dimension of PRY.C (NO) Series Spring Return Actuator



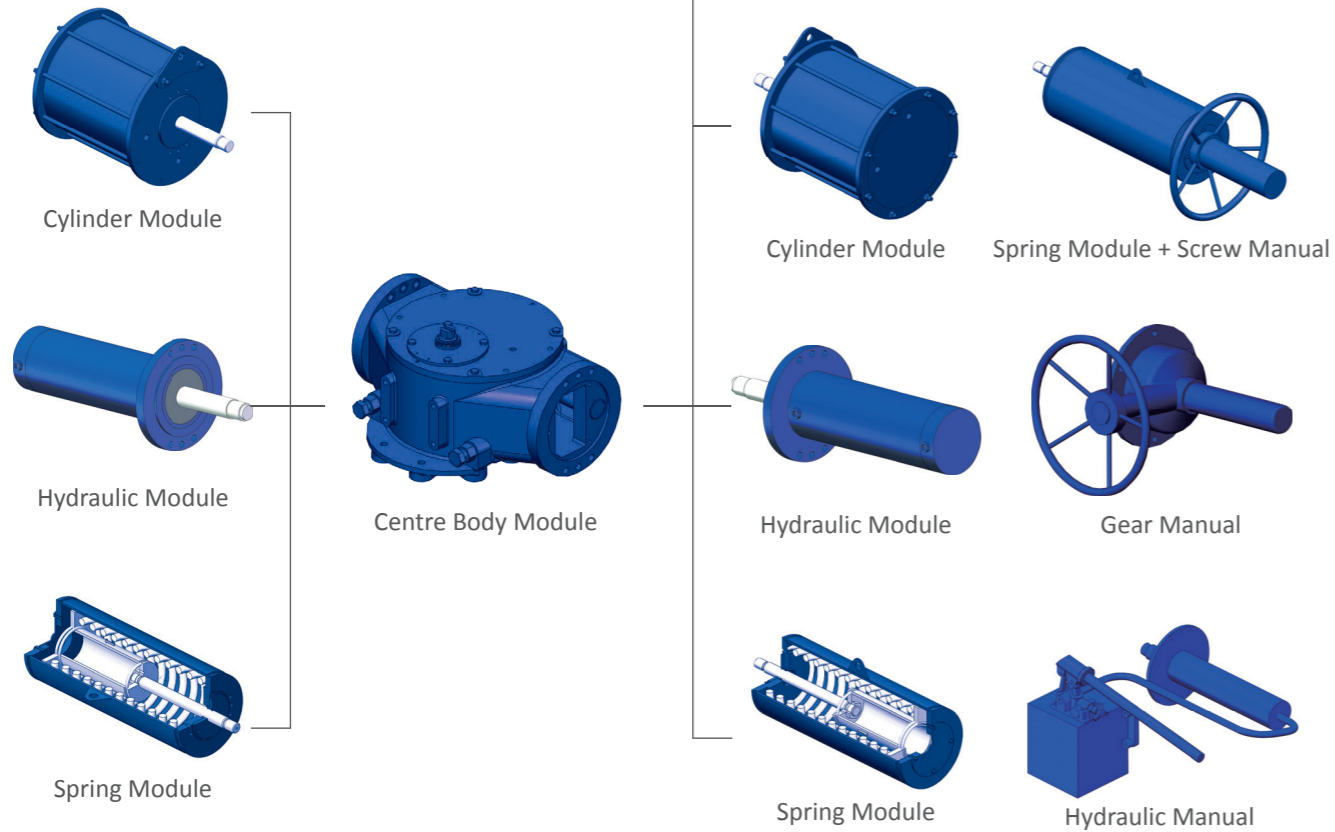
Model	L	L1	L2	H	D	D5 × Depth	A	B	Connecting Flange	Air Connection
									ISO5211	
PRY.C06.201S.04 NO	1348	505	180	214	□225	∅48x65	51.8	14	F14	3/8"G(NPT)
PRY.C06.201S.05 NO	1298	505	180	214	□225	∅48x65	51.8	14	F14	3/8"G(NPT)
PRY.C06.201S.06 NO	1328	505	180	214	□225	∅48x65	51.8	14	F14	3/8"G(NPT)
PRY.C06.221S.04 NO	1298	515	180	214	□250	∅48x65	51.8	14	F14	1/2"G(NPT)
PRY.C06.221S.05 NO	1328	515	180	214	□250	∅48x65	51.8	14	F14	1/2"G(NPT)
PRY.C06.221S.06 NO	1348	515	180	214	□250	∅48x65	51.8	14	F14	1/2"G(NPT)
PRY.C08.221S.04 NO	1487	605	200	238	□250	∅60x100	64.4	18	F16	1/2"G(NPT)
PRY.C08.221S.05 NO	1487	605	200	238	□250	∅60x100	64.4	18	F16	1/2"G(NPT)
PRY.C08.221S.06 NO	1487	605	200	238	□250	∅60x100	64.4	18	F16	1/2"G(NPT)
PRY.C08.251S.04 NO	1487	605	200	238	□280	∅60x100	64.4	18	F16	1/2"G(NPT)
PRY.C08.251S.05 NO	1487	605	200	238	□280	∅60x100	64.4	18	F16	1/2"G(NPT)
PRY.C08.251S.06 NO	1507	605	200	238	□280	∅60x100	64.4	18	F16	1/2"G(NPT)
PRY.C08.281S.04 NO	1487	605	200	238	□310	∅60x100	64.4	18	F16	1/2"G(NPT)
PRY.C08.281S.05 NO	1507	605	200	238	□310	∅60x100	64.4	18	F16	1/2"G(NPT)
PRY.C08.281S.06 NO	1537	605	200	238	□310	∅60x100	64.4	18	F16	1/2"G(NPT)
PRY.C1.281S.04 NO	1680	680	225	246	□310	∅72x120	76.9	20	F25/F16	1/2"G(NPT)
PRY.C1.281S.05 NO	1680	680	225	246	□310	∅72x120	76.9	20	F25/F16	1/2"G(NPT)
PRY.C1.281S.06 NO	1680	680	225	246	□310	∅72x120	76.9	20	F25/F16	1/2"G(NPT)
PRY.C1.321S.04 NO	1660	660	225	246	∅395	∅72x120	76.9	20	F25/F16	1/2"G(NPT)
PRY.C1.321S.05 NO	1660	660	225	246	∅395	∅72x120	76.9	20	F25/F16	1/2"G(NPT)
PRY.C1.321S.06 NO	1710	660	225	246	∅395	∅72x120	76.9	20	F25/F16	1/2"G(NPT)
PRY.C1.351S.04 NO	1660	660	225	246	∅430	∅72x120	76.9	20	F25/F16	3/4"G(NPT)
PRY.C1.351S.05 NO	1710	660	225	246	∅430	∅72x120	76.9	20	F25/F16	3/4"G(NPT)
PRY.C1.351S.06 NO	1710	660	225	246	∅430	∅72x120	76.9	20	F25/F16	3/4"G(NPT)

Model	L	L1	L2	H	D	D5 × Depth	A	B	Connecting Flange	Air Connection
									ISO5211	
PRY.C1.401S.04 NO	1710	660	225	246	∅500	∅72x120	76.9	20	F25/F16	1"G(NPT)
PRY.C1.401S.05 NO	1710	660	225	246	∅500	∅72x120	76.9	20	F25/F16	1"G(NPT)
PRY.C1.401S.06 NO	1730	660	225	246	∅500	∅72x120	76.9	20	F25/F16	1"G(NPT)
PRY.C2.401S.04 NO	1898	775	285	269	∅500	∅100x150	106.4	28	F30/F25	1"G(NPT)
PRY.C2.401S.05 NO	1928	775	285	269	∅500	∅100x150	106.4	28	F30/F25	1"G(NPT)
PRY.C2.401S.06 NO	1948	775	285	269	∅500	∅100x150	106.4	28	F30/F25	1"G(NPT)
PRY.C2.451S.04 NO	1928	775	285	269	∅550	∅100x150	106.4	28	F30/F25	1"G(NPT)
PRY.C2.451S.05 NO	1948	775	285	269	∅550	∅100x150	106.4	28	F30/F25	1"G(NPT)
PRY.C2.451S.06 NO	1948	775	285	269	∅550	∅100x150	106.4	28	F30/F25	1"G(NPT)
PRY.C3.451S.04 NO	2143	915	345	310	∅550	∅160x200	169.4	40	F35/F30	1"G(NPT)
PRY.C3.451S.05 NO	2193	915	345	310	∅550	∅160x200	169.4	40	F35/F30	1"G(NPT)
PRY.C3.451S.06 NO	2193	915	345	310	∅550	∅160x200	169.4	40	F35/F30	1"G(NPT)
PRY.C3.501S.04 NO	2193	915	345	310	∅600	∅160x200	169.4	40	F35/F30	1 1/4"G(NPT)
PRY.C3.501S.05 NO	2193	915	345	310	∅600	∅160x200	169.4	40	F35/F30	1 1/4"G(NPT)
PRY.C3.501S.06 NO	2243	915	345	310	∅600	∅160x200	169.4	40	F35/F30	1 1/4"G(NPT)
PRY.C3.561S.04 NO	2193	915	345	310	∅660	∅160x200	169.4	40	F35/F30	1 1/4"G(NPT)
PRY.C3.561S.05 NO	2243	915	345	310	∅660	∅160x200	169.4	40	F35/F30	1 1/4"G(NPT)
PRY.C3.561S.06 NO	2273	915	345	310	∅660	∅160x200	169.4	40	F35/F30	1 1/4"G(NPT)
PRY.C3.631S.04 NO	2273	915	345	310	∅730	∅160x200	169.4	40	F35/F30	1 1/2"G(NPT)
PRY.C3.631S.05 NO	2323	915	345	310	∅730	∅160x200	169.4	40	F35/F30	1 1/2"G(NPT)
PRY.C3.631S.06 NO	2373	915	345	310	∅730	∅160x200	169.4	40	F35/F30	1 1/2"G(NPT)
PRY.C4.631S.04 NO	2667	1050	412	340	∅730	∅180x220	190.4	45	F40	1 1/2"G(NPT)
PRY.C4.631S.05 NO	2693	1050	412	340	∅730	∅180x220	190.4	45	F40	1 1/2"G(NPT)
PRY.C4.631S.06 NO	2763	1050	412	340	∅730	∅180x220	190.4	45	F40	1 1/2"G(NPT)
PRY.C4.701S.04 NO	2693	1050	412	340	∅810	∅180x220	190.4	45	F40	1 1/2"G(NPT)
PRY.C4.701S.05 NO	2763	1050	412	340	∅810	∅180x220	190.4	45	F40	1 1/2"G(NPT)
PRY.C4.701S.06 NO	2843	1050	412	340	∅810	∅180x220	190.4	45	F40	1 1/2"G(NPT)
PRY.C4.801S.04 NO	2763	1050	412	340	∅910	∅180x220	190.4	45	F40	1 1/2"G(NPT)
PRY.C4.801S.05 NO	2843	1050	412	340	∅910	∅180x220	190.4	45	F40	1 1/2"G(NPT)
PRY.C4.801S.06 NO	2973	1050	412	340	∅910	∅180x220	190.4	45	F40	1 1/2"G(NPT)
PRY.C5.801S.04 NO	3176	1230	486	420	∅910	∅220x250	231.4	50	F48/F40	1 1/2"G(NPT)
PRY.C5.801S.05 NO	3236	1230	486	420	∅910	∅220x250	231.4	50	F48/F40	1 1/2"G(NPT)
PRY.C5.801S.06 NO	3296	1230	486	420	∅910	∅220x250	231.4	50	F48/F40	1 1/2"G(NPT)
PRY.C5.901S.04 NO	3236	1230	486	420	∅1010	∅220x250	231.4	50	F48/F40	2"G(NPT)
PRY.C5.901S.05 NO	3296	1230	486	420	∅1010	∅220x250	231.4	50	F48/F40	2"G(NPT)
PRY.C5.901S.06 NO	3386	1230	486	420	∅1010	∅220x250	231.4	50	F48/F40	2"G(NPT)
PRY.C6.801S.04 NO	4092	1555	658	490	∅910	∅280x320	292.4	63	F60/F48	1 1/2"G(NPT)
PRY.C6.801S.05 NO	4167	1555	658	490	∅910	∅280x320	292.4	63	F60/F48	1 1/2"G(NPT)
PRY.C6.801S.06 NO	4177	1555	658	490	∅910	∅280x320	292.4	63	F60/F48	1 1/2"G(NPT)
PRY.C6.901S.04 NO	4167	1555	658	490	∅1010	∅280x320	292.4	63	F60/F48	2"G(NPT)
PRY.C6.901S.05 NO	4177	1555	658	490	∅1010	∅280x320	292.4	63	F60/F48	2"G(NPT)
PRY.C6.901S.06 NO	4087	1555	658	490	∅1010	∅280x320	292.4	63	F60/F48	2"G(NPT)
PRY.C6.1001S.04 NO	4177	1555	658	490	∅1110	∅280x320	292.4	63	F60/F48	2"G(NPT)
PRY.C6.1001S.05 NO	4087	1555	658	490	∅1110	∅280x320	292.4	63	F60/F48	2"G(NPT)
PRY.C6.1001S.06 NO	4247	1555	658	490	∅1110	∅280x320	292.4	63	F60/F48	2"G(NPT)

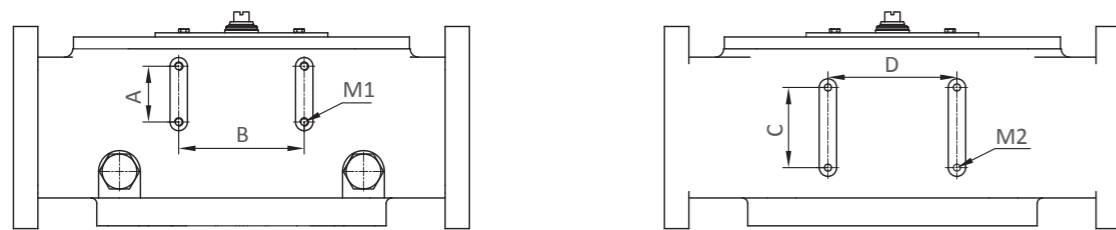
The dimension of D5 can be customized according to your requirements.

# Module Design

The PRY series sets benchmarks with its versatile module construction. It can easily be converted from a single-acting to double-acting version or subsequently supplemented with a manual override option. Both the pneumatic and the spring modules can be easily disassembled without any special tools.



## Body Connecting Dimension



Body No.	A x B	C x D	Screwed Hole M1	Screwed Hole M2
B06/C06	50x90	80x125	4-M12 deep 18	4-M12 deep 18
B08/C08	50x125	80x125	4-M12 deep 18	4-M12 deep 18
B1/C1	50x125	80x125	4-M12 deep 18	4-M12 deep 18
B2/C2	80x125	95x155	4-M12 deep 18	4-M12 deep 18
B3/C3	80x180	115x185	4-M12 deep 18	4-M12 deep 18
B4/C4	80x220	115x230	4-M12 deep 18	4-M12 deep 18
B5/C5	80x220	140x310	4-M12 deep 18	4-M12 deep 18
B6/C6	100x220	180x400	4-M12 deep 18	4-M12 deep 18

# Typecode

PRY . C1 . 50 1 S . 04 . 1625 S 55 . P R S . 00

Type \_\_\_\_\_

Body size \_\_\_\_\_

Cylinder size \_\_\_\_\_

Quantity cylinders (1 or 2) \_\_\_\_\_

Function \_\_\_\_\_

D: double-acting

S: single-acting

Spring set \_\_\_\_\_

ISO valve interface \_\_\_\_\_

14: F14 1625: F16 + F25

16: F16 2530: F25 + F30

25: F25 3035: F30 + F35

30: F30 4048: F40 + F48

35: F35 4860: F48 + F60

40: F40

48: F48

60: F60

Stem connection \_\_\_\_\_

S: Square acc. to ISO 5211 or DIN 3337

D: Double-D

K: Key connection

Stem connection dimension \_\_\_\_\_

Dimension in mm (not applicable for key connection)

Mounting direction \_\_\_\_\_

P: Parallel to pipe

T: Transversal to pipe

Spring rotation sense \_\_\_\_\_

R: Clockwise CW (Normally closed)

L: Counterclockwise CCW (Normally open)

Temperature version \_\_\_\_\_

S: Standard (-20°...+80°C)

H: High temperature (-15°...+150°C)

T: Low temperature (-40° ... +80°C)

Manual operation \_\_\_\_\_

00: without

01: Screw manual

02: Gear manual

03: Hydraulic manual



**ProtACT GmbH**  
**Märkerstraße 18**  
56307 Dernbach

Tel: +49 (0) 2605 96 25 19-0  
Fax: +49 (0) 2605 96 25 19-6  
Email: [protact@protact-gmbh.de](mailto:protact@protact-gmbh.de)

**Website: [www.protact-gmbh.de](http://www.protact-gmbh.de)**